

Catalog 2019



RefrigiWear®

Table of Contents

04	NEW PRODUCTS A PREVIEW OF THIS YEAR'S NEW PRODUCTS	56	FLEECE & SWEATSHIRTS
06	COMFORT RATINGS FIND THE PRODUCTS BEST SUITED FOR DIFFERENT TEMPERATURES	60	LAYERS
07	EXTREME COMFORT IN EXTREME TEMPS WITH PROTECTION DOWN TO -60°F	61	ALL-SEASON
16	IRON-TUFF® OUR ICONIC LINE OF -50°F RATED GARMENTS	64	WOMEN'S
22	POLARFORCE™ WARM AND FLEXIBLE PROTECTION THAT MOVES WITH YOU	68	GLOVES
26	ERGOFORCE® FUNCTIONAL, TOUGH GEAR WITH WATERPROOF PROTECTION	84	FOOTWEAR
27	FREEZER EDGE TOUGH & WARM, WITH ADDED VISIBILITY	102	HEADWEAR
28	SOFTSHELL BREATHABLE GARMENTS DESIGNED FOR COMFORT & WARMTH	108	ACCESSORIES
34	COMFORTGUARD® EXTREMELY DURABLE AND BUILT FOR TOUGH ENVIRONMENTS	110	BAGS
36	CHILLBREAKER® PLUS & CHILLBREAKER® VERSATILE AND FUNCTIONAL WITH NEW DESIGNS	111	COVERS & BLANKETS
39	COLD TIPS TIPS FOR STAYING WARM IN THE COLD	112	SIZE CHARTS
40	ARCTIC DUCK® SUPREME DURABILITY PAIRED WITH COMFORT & STYLE	113	SPECIAL SERVICES
41	DIAMOND QUILTED STYLISH DESIGNS THAT OFFER DURABILITY & FUNCTION	114	EMBROIDERY
42	COOLER WEAR™ TOUGH, LIGHTWEIGHT GEAR MADE TO LAST		
43	ECONO-TUFF® RESILIENT, LIGHTWEIGHT GEAR MADE TO LAST		
44	RAINWEAR WATERPROOF PROTECTION AGAINST RAINY OR WET CONDITIONS		
46	HIVIS HIGH VISIBILITY GEAR THAT KEEPS YOU SAFE & WARM		

Quality Statement

Since 1954, RefrigiWear® has been committed to Quality, Performance and Reliability. Our founder, Myron Breakstone, demanded a standard of excellence that will never be compromised.

We understand that the customer defines quality. To consistently exceed customer expectations, we challenge our dedicated employees and loyal suppliers to continuous improvement of every product, process and service. We promise to aggressively protect the reputation of RefrigiWear® as the industry leader in quality.



NEW EXTREME AND POLARFORCE™ ADDITIONS. WHEN YOU NEED TO TACKLE TOUGH JOBS IN HARSH CONDITIONS, THERE IS NOTHING BETTER THAN EXTREME AND POLARFORCE™ FROM REFRIGIWEAR®. NEW PRODUCTS IN THESE COLLECTIONS GIVE YOU MORE COVERAGE WITH THE SAME PROTECTION, WARMTH AND DURABILITY YOU TRUST EVERY DAY TO GET THE JOB DONE – NOW WITH MORE OPTIONS.



EXTREME COLLECTION

Starting on Page. 7

NEW 8480 Extreme Hybrid Sweatshirt with Performance-Flex | [Page 12](#)

NEW 1030 Extreme Sock | [Page 13](#)

NEW 6480 Extreme Dual-Layer Clava | [Page 13](#)

NEW 1700 Extreme Pac Boot | [Page 14](#)



POLARFORCE™ COLLECTION

Starting on Page. 22

NEW 9740 PolarForce™ Hybrid Fleece Jacket | [Page 24](#)

NEW 1020 PolarForce™ Sock | [Page 24](#)

NEW 6440 PolarForce™ Balaclava | [Page 24](#)

NEW PRODUCTS

NEW
PRODUCT

RefrigiWear's new products expand our collections of durable, warm gear to help you get the job done.

TACKLE ANY JOB WITH THE PROTECTION AND TOUGHNESS YOU TRUST.



7495 Insulated Softshell Enhanced Visibility Bib Overalls

Page 29

8480 Extreme Hybrid Sweatshirt with Performance-Flex

Page 14



8490 Insulated Softshell Enhanced Visibility Jacket

Page 28



1700 Extreme Pac Boot

Page 14

9740 PolarForce™ Hybrid Fleece Jacket

Page 24



9175 HiVis Rainwear Jacket

Page 45



1500 Lightweight Athletic Driver

Page 96



2790 ArcticFit™ Max

Page 72



2267 Dual-Layer Thermal Ergo Cut Resistant

Page 79



2237 HiVis Thermal Ergo Cut Resistant

Page 79



2207 Ergo Cut Resistant

Page 79



2260 ShrinkMax

Page 79



1030 Extreme Sock

Page 100

6480 Extreme Dual-Layer Clava

Page 102



6440 PolarForce™ Balaclava

Page 102



1020 PolarForce™ Sock

Page 100



Comfort Ratings

RefrigiWear® Comfort Ratings are guidelines that help communicate the level of warmth a person can expect from our products under normal activity levels. To assign a temperature rating, RefrigiWear® takes into account key elements of the garment's construction: insulation, outershell and lining. Taken together, these elements help create the "Insulating Power" a garment has to keep you warm.



Please Remember that Comfort Ratings are Only Guidelines.

It's important to note that activity levels will have a considerable impact on warmth. The more active you are, the more body heat you generate. Also, each person's unique circulation, metabolism and physical characteristics will factor into their overall warmth.

Feature Icons

Throughout the catalog you will notice icons next to products. These icons identify notable product features. The list below explains what each icon means, so you can find the products with the right features for your needs.

 ANSI	ANSI compliance at some level.	 Max Comfort	Featured on any boots that have the VitaComfort™ system.	 Stretch	Offers extra stretch for comfort and movement.
 Antimicrobial	Treated to fight bacteria growth.	 Moisture-wicking	Pulls moisture from skin to keep you dry.	 Touchscreen	Allows gloves to be used on touchscreen devices.
 Breathable	Allows sweat to evaporate away from skin.	 Performance Flex	RefrigiWear exclusive feature, allows easier movement.	 Protection	Treated to protect from damaging UV rays.
 Cut Resistant	Withstands pressure from sharp objects, preventing cuts.	 Puncture Resistant	Includes plate that prevents puncture.	 Ultra Slip Resistant	Protects against slips in most conditions.
 Dual-Layer	Two layers of protection.	 Recycled Materials	Crafted from recycled materials to reduce waste.	 Waterproof	Fully protected against water - inside will remain dry.
 Durable	Withstands extreme wear and tear.	 Reversible	Can be flipped "inside out" and worn.	 Water Repellent	Exterior repels water in light conditions.
 Lightweight	Thinner, lighter materials that won't weigh you down.	 CSA Compliance	CSA compliance at any level.	 Wind-tight	Protects against wind and drafts.

WHEN THE COLD FREEZES TO THE BONE

TAKE IT TO THE EXTREME

The RefrigiWear® Extreme Collection offers the warmest products we've ever created, designed to keep you safe when working in the most extreme conditions. Backed by over 60 years of experience in cold protection, Extreme is the best of the best to help you

MASTER THE COLD.





EXTREME

RefrigiWear® Extreme takes warmth to a new level. With a comfort rating of -60°F, the Extreme Softshell Jacket and Extreme Softshell Bib are the warmest you can find anywhere. With over 600 grams of insulating power and a water-repellent, breathable polyurethane membrane, these garments will keep you safe and comfortable in the most extreme situations.



Durable



Water-Repellent



Breathable



Wind-Tight



Stretch



Dual front zipper system allows you to regulate temperature, seal out drafts and access an inner pocket without completely unzipping the jacket

Chest pocket with waterproof zipper is perfect for cell phones

Reflective detail at waist, sleeve and center of back for increased safety

Comfort stretch microfiber shell provides excellent comfort and mobility

Pencil pockets on left sleeve

Fleece lined pockets add comfort and warmth

Adjustable cuffs

Sleeves extend with thumbhole cuffs to create better wind seal

0790 Extreme Softshell Jacket

- Over 600g of insulating power
- 100% Polyester comfort stretch microfiber shell
- Water-repellent, breathable polyurethane membrane
- Silver will reflective lining | 2 Hand warmer zipper pockets
- Waterproof zippers on chest and sleeve pockets
- 2 Stall pencil pocket on left sleeve
- Dual front zipper system to regulate temperature
- Adjustable inner waist seal for draft protection
- Adjustable cuffs | Improved wind seal with inset thumbhole cuffs
- Reflective piping trim with HiVis accents | HiVis glove clip

Black

0790R Reg | S-5XL



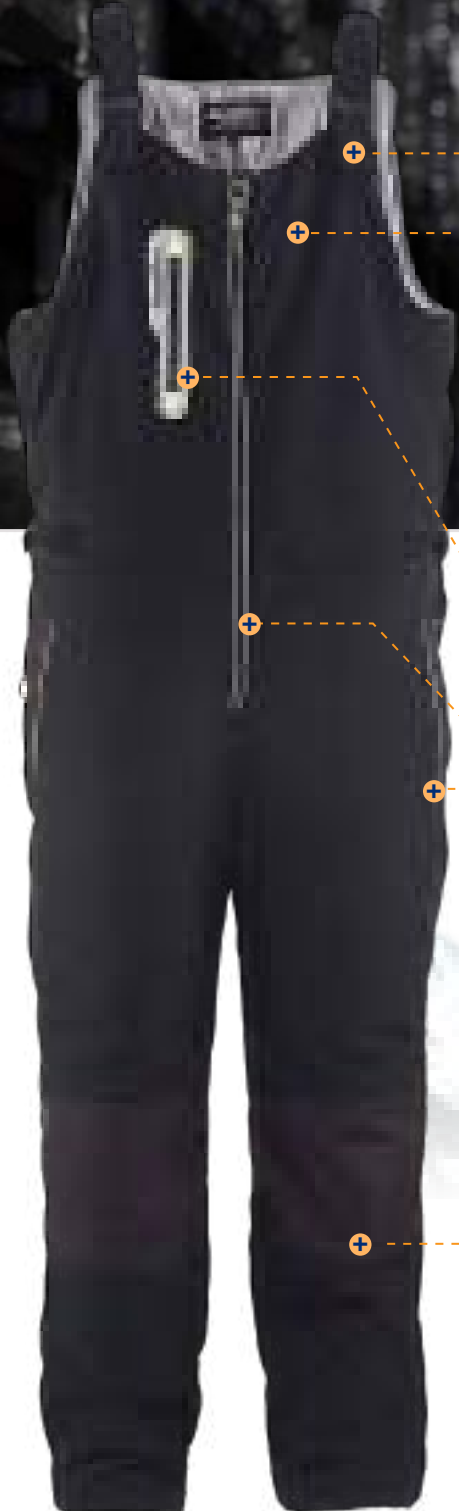
Sleeve pocket with waterproof zipper and pencil pouch



Dual front zipper system helps regulate temperature and create a better seal



Adjustable inner waist seal for draft protection



Adjustable suspenders create a more comfortable fit for a variety of users

Higher torso coverage

Chest pocket with waterproof zipper is perfect for cell phones

Reflective detail increases safety

Fleece lined pockets add comfort and warmth

Abrasion-resistant knee patches

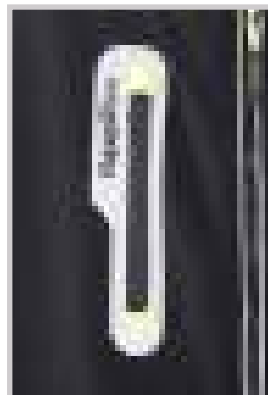


0795 Extreme Softshell Bib Overalls

- Over 600g of insulating power
- 100% Polyester comfort stretch microfiber shell
- Water-repellent, breathable polyurethane membrane
- Silver twill reflective lining | 2 Hand warmer pockets
- Waterproof zipper on chest pocket
- Adjustable waist and bottom legs | Abrasion-resistant knee patches
- Higher front and back improve torso coverage
- Heel reinforcement patches | Adjustable suspenders
- Reflective piping trim with HiVis accents | HiVis glove clip

0795R Reg | S-5XL

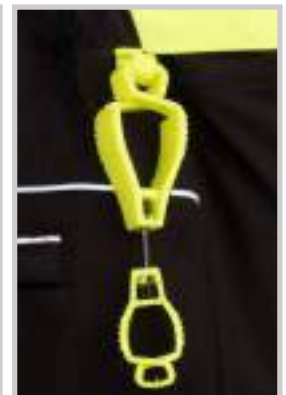
Black



Chest pocket with waterproof zipper



Abrasion-resistant knee patches



Convenient glove clip for easy access to handwear

EXTREME

The Extreme Softshell was designed for the toughest conditions. When your job needs extra warmth in a low visibility environment, you need the added safety of High Visibility Extreme Softshell. All the toughness of the Extreme Softshell with the added benefits of HiVis material and reflective tape.



Dual front zipper system allows you to regulate temperature, seal out drafts and access an inner pocket without completely unzipping the jacket

Chest pocket with waterproof zipper is perfect for cell phones

Comfort stretch microfiber shell provides excellent comfort and mobility

Pencil pockets on left sleeve

Stitchless bonded reflective tape for increased durability

Fleece lined pockets add comfort and warmth

Adjustable cuffs

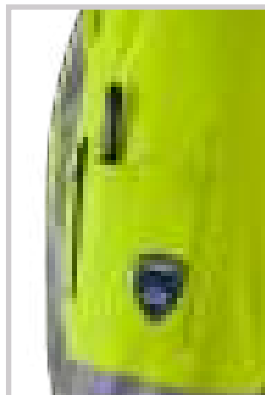
Sleeves extend with thumbhole cuffs to create better wind seal

0796 HiVis Extreme Softshell Jacket

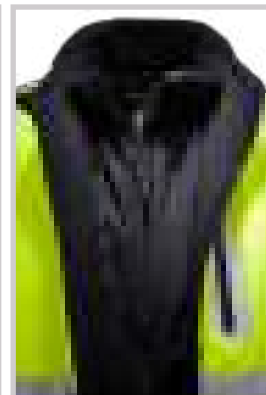
- Over 600g insulating power
- 100% Polyester comfort stretch microfiber shell
- Water-repellent, breathable polyurethane membrane
- 2 Hand warmer zipper pockets | 2 Stall pencil pocket on left sleeve
- Waterproof zippers on chest and sleeve pockets
- Dual front zipper system to regulate temperature
- Adjustable inner waist seal for draft protection
- Adjustable cuffs | Improved wind seal with inset thumbhole cuffs
- ANSI Class 3 compliant | CSA Z96 Approved
- 2" Silver reflective tape with X shape on back
- Stitchless bonded tape for increased durability

0796R Reg | S-5XL

Lime



Sleeve pocket with waterproof zipper and pencil pouch



Dual front zipper system helps regulate temperature and create a better seal



Stitchless bonded tape for increased durability



Adjustable suspenders create a more comfortable fit for a variety of users

Higher torso coverage

Chest pocket with waterproof zipper is perfect for cell phones

Fleece lined pockets add comfort and warmth

Abrasion-resistant knee patches

Stitchless bonded reflective tape for increased durability



Durable



Water Repellent



Breathable



Wind-tight



Stretch



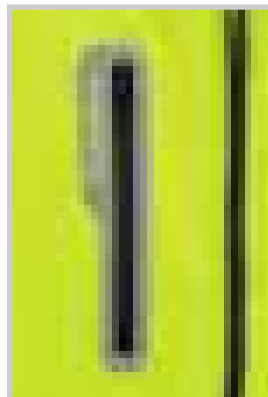
ANSI

0797 HiVis Extreme Softshell Bib Overalls

- Over 600g insulating power
- 100% Polyester comfort stretch microfiber shell
- Water-repellent, breathable polyurethane membrane
- 2 Hand warmer pockets | Waterproof zipper on chest pocket
- Adjustable waist and bottom legs
- Abrasion-resistant knee patches
- Higher front and back improve torso coverage
- Heel reinforcement patches | Adjustable suspenders
- ANSI Class E compliant | 2 Rows of 2" silver reflective tape
- Stitchless bonded tape for increased durability

Lime

0797R Reg | S-5XL



Chest pocket with waterproof zipper



Abrasion-resistant knee patches



Convenient glove clip for easy access to handwear



0780 Extreme Sweater Jacket

300g 80% Polyester / 20% cotton fleece 3 layer bonded outershell
 200g Soft microfleece lining | Wind-tight, water-repellent
 5 Zipper pockets: 2 hand warmer, left chest, left sleeve, right inside
 Waterproof zippers on chest and sleeve pockets
 HiVis lime zipper garages | Reflective silver piping
 Reflective silver piping on zipper and HiVis pull tab | Full zip, stand-up collar

0780R Reg | S-5XL

Gray



8480 Extreme Hybrid Sweatshirt with Performance-Flex



Layer 1: 390g Polyester melange knit outershell
Layer 2: 120g Quilted polyester fiberfill insulation
Layer 3: 120g Jersey blend

Pullover with waterproof 1/2 zip closure
 Kangaroo front pocket with rivet reinforcements
 Right chest pocket with waterproof zipper
 Left forearm pocket with waterproof zipper
 2 Stall pencil pocket on left sleeve | Fleece lined hood
 Performance-Flex on elbows for improved movement
 Abrasion-resistant panels on sleeves and kangaroo pocket
 Thumb holes in cuff to seal out drafts | Reflective piping

8480R Reg | S-5XL

Black



9480 Women's Extreme Sweater Jacket

300g 80% Polyester / 20% cotton fleece 3 layer bonded outershell
 Wind-tight, water-repellent | 200g Soft microfleece lining
 4 Zipper pockets: 2 hand warmer, left chest, inside
 Waterproof zipper on chest pocket
 Snap on hood | Adjustable cuffs | Draw cord at bottom
 Red zipper garages and accents | Reflective silver piping

9480R Reg | S-3XL

Gray





Pre-curved, ergonomic fit



0679 Extreme Freezer Glove

100g Thinsulate™ plus foam insulation with tricot lining
 Knitted fabric back with synthetic leather palm
 Pre-curved, ergonomic fit
 Silicone grip pattern on palm | EVA palm pads
 Impact protection on fingers, knuckles and back
 Kevlar reinforced thumb crotch | Rolled fingertips
 Silver reflective strip on knuckles | Stretch neoprene cuff
 Pull tab with rubber ID tag on wrist

Induradex™

Insulation	9
Durability	9
Dexterity	6

M, L, XL, 2XL Available with Key-Rite & Touch-Rite Nib. See page 70 for details.



Pre-curved, ergonomic fit



0617 Extreme Freezer Mitt

100g Thinsulate™ plus foam insulation with tricot lining
 Knitted fabric back with synthetic leather palm
 Silicone grip pattern on palm | EVA palm pads
 Impact protection on fingers, knuckles and back
 Kevlar reinforced thumb crotch | Pre-curved, ergonomic fit
 Silver reflective strip on knuckles | Stretch neoprene cuff
 Pull tab with rubber ID tag on wrist

Induradex™

Insulation	9
Durability	9
Dexterity	6

M, L, XL



1030 Extreme Sock

72% Merino wool / 26% acrylic / 2% spandex
 Arch support | Hi-splice nylon reinforcements in toe and heel
 Weltd top keeps socks fitting right
 Mesh ventilation on top of foot for maximum breathability

S/M | L/XL



6480 Extreme Dual-Layer Clava

Dual-layer Polartec® fleece | Reflective piping at seams
 Form fitting for ultimate warmth
 Made from recycled materials
 S/M | L/XL

Black
 ● ★ ★ ★





1700 Extreme Pac Boot

INSULATION: 600g DRI-BLAZE® lining
UPPER: 9" Leather/nylon
OUTSOLE: Anti-Slip RefrigiWear®
TOE: ASTM Composite
FEATURES: The Boa® System for lacing
 Innovative lightweight BOA® M4 dial
 Easily adjust fit without removing your gloves
 Waterproof
 Rubber heel plate
 Gravity-fed moisture management system
 Electrical hazard compliant



Reg 1700CR Full 7-14



*Our exclusive VitaComfort™ system enhances comfort, absorbs shock and increases breathability.

1700L Extreme Boot Liner



600g Thinsulate™ insulation
 DRI-BLAZE® lining for superior comfort, warmth and durability
 Moisture wicking
 Reinforced heel for added durability

Fits styles 1700CR & 112CR
 Reg 1700LR Full 7-14



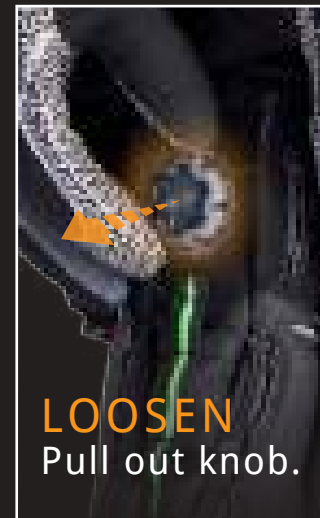
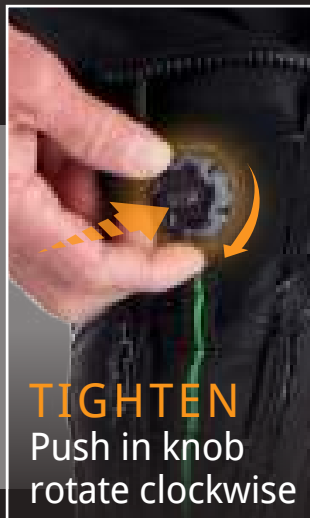
THE BOA® SYSTEM

The Boa® System gives you the best fit that lasts your whole shift all with the twist of a knob. Easily tighten and loosen fit without removing your gloves so you can concentrate on work, not discomfort.



HOW IT WORKS >>

- 1 Lifetime Guarantee on the Boa® System. www.boafit.com/support
- 2 Precise lacing every time for the best fit that won't loosen during your shift.
- 3 Easily loosen and tighten laces without removing gloves.





192 Extreme Freezer Pull-On

- INSULATION:** 1400g Thinsulate™ Ultra with DRI-BLAZE® lining
- UPPER:** 9" Leather/nylon
- OUTSOLE:** Anti-Slip RefrigiWear®
- TOE:** ASTM/CSA composite
- FEATURES:** Step-in design with heavy-duty pull-on handles
Waterproof
CSA puncture resistant plate
Rubber toe guard
Rubber heel plate
Gravity-fed moisture management system
ESR/Electrical hazard compliant

Reg 192CR Full 7-14



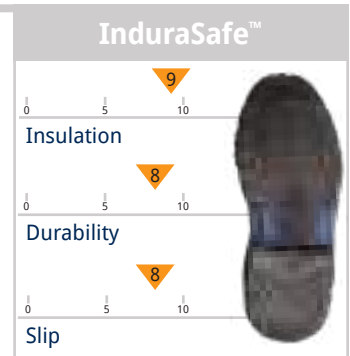
*Our exclusive VitaComfort™ system enhances comfort, absorbs shock and increases breathability.



190 Extreme Freezer

- INSULATION:** 1200g Thinsulate™ Ultra
- UPPER:** 8" Leather
- OUTSOLE:** Anti-Slip RefrigiWear®
- TOE:** ASTM/CSA composite
- FEATURES:** Waterproof
CSA puncture resistant plate
Rubber toe guard
Rubber heel plate
Gravity-fed moisture management system
Includes bonus pair of boot laces
ESR/Electrical hazard compliant

Reg 190CR Full 7-14, Half 8½-11½



*Our exclusive VitaComfort™ system enhances comfort, absorbs shock and increases breathability.

ICONIC WARM | TOUGH

PROVEN IN THE COLD FOR OVER 60 YEARS

Since 1954, thousands of people have trusted Iron-Tuff® garments to protect them from extreme cold environments. Our iconic line of garments provides protection down to -50°F as well as durability and reliability that you can count on for years to come. Iron-Tuff® products are the classic solution to keep you warm, safe and productive.



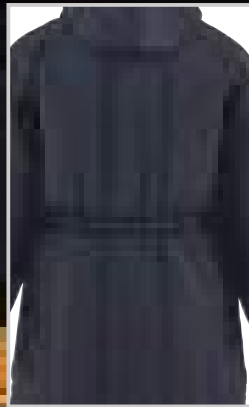
Durable



Water-Repellent



Wind-Tight



Elastic back band on jackets provides additional draft protection and comfortable fit.



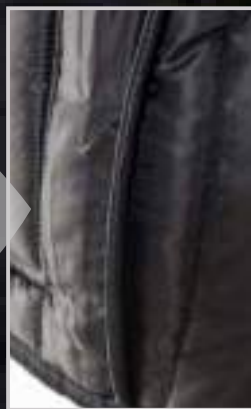
Heavy-duty zippers ensure ease-of-use and durability for long-lasting wear and comfort.



Ample, well-placed pockets make garments as functional as they are warm.



Stay warm and comfortable with RefrigiFill™, our proprietary blend of insulation that has been perfected over our 60 years of insulating garments.



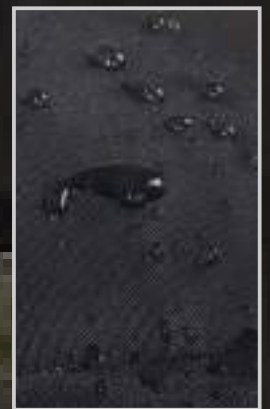
Bound seams seal out cold air and drafts as well as enhance product longevity.



Reinforced brass rivets at high-stress points increase durability and ensure years of quality performance.



Heel reinforcement patches protect overalls and coveralls from rips and tears resulting from friction with boots.



Water-repellent, wind-tight finish provides an added layer of protection from the cold.



Durable



Water Repellent



Wind-tight



0358

0343

0358 Iron-Tuff® Siberian™

11.25 oz. RefrigiFill™ insulation
Tear and abrasion-resistant 420 denier nylon outershell
Water-repellent, wind-tight finish
Reinforced brass rivets at stress points | Bound seams seal out drafts
Insulated patch and chest pockets | Zipper sleeve pocket with pencil stall
Raglan sleeves | Draft-sealing elastic back band | Soft fleece collar

0358R Reg | S-5XL 0358T Tall | M-5XL

Navy | Sage



0343 Iron-Tuff® Enhanced Visibility Siberian™

11.25 oz. RefrigiFill™ insulation
Tear and abrasion-resistant 420 denier nylon outershell
Water-repellent, wind-tight finish | Reinforced brass rivets at stress points
Bound seams seal out drafts | Insulated patch and chest pockets
Zipper sleeve pocket with pencil stall | Raglan sleeves
Draft-sealing elastic back band | Soft fleece collar
2" 3M™ Scotchlite™ reflective tape around waist and forearms

0343R Reg | S-5XL 0343T Tall | M-5XL

Navy



0342 Iron-Tuff® Jackoat®

11.25 oz. RefrigiFill™ insulation
Tear and abrasion-resistant 420 denier nylon outershell
Water-repellent, wind-tight finish | Reinforced brass rivets at stress points
Bound seams seal out drafts | Oversized insulated pockets
Zipper sleeve pocket with pencil stall | Draft-sealing elastic back band
Double-slide two-way zipper | Soft fleece collar
See HiVis version with tape on pg. 47

0342R Reg | S-5XL 0342T Tall | M-5XL

Navy | Sage



0323 Women's Iron-Tuff® Coat

11.25 oz. RefrigiFill™ insulation
Tear and abrasion-resistant 420 denier nylon outershell
Water-repellent, wind-tight finish | Reinforced brass rivets at stress points
Bound seams seal out drafts
2 Exterior insulated pockets | Interior essentials pocket
Tapered waist with elastic back band
Lower neckline with soft fleece collar

0323R Reg | XS-3XL

Navy





Durable



Water Repellent



Wind-tight



0356 Iron-Tuff® Bomber

11.25 oz. RefrigiFill™ insulation
 Tear and abrasion-resistant 420 denier nylon outershell
 Water-repellent, wind-tight finish
 Bound seams seal out drafts | 2 Hand warmer zipper pockets
 Zipper sleeve pocket with pencil stall | Draft-sealing waist band
 Soft fleece collar

0356R Reg | S-5XL

Navy



0322 Iron-Tuff® Polar

11.25 oz. RefrigiFill™ insulation
 Tear and abrasion-resistant 420 denier nylon outershell
 Water-repellent, wind-tight finish | Reinforced brass rivets at stress points
 Bound seams seal out drafts | Insulated patch pockets
 Pencil pocket on sleeve | Draft-sealing elastic back band
 Soft fleece collar

0322R Reg | S-5XL 0322T Tall | M-5XL

Navy



0359 Iron-Tuff® Arctic

11.25 oz. RefrigiFill™ insulation
 Tear and abrasion-resistant 420 denier nylon outershell
 Water-repellent, wind-tight finish | Reinforced brass rivets at stress points
 Bound seams seal out drafts | 2 Oversized insulated front pockets
 Pencil pocket on sleeve | Waist length with cinch draw cord
 Soft fleece collar

0359R Reg | S-5XL

Navy





Durable



Water Repellent



Wind-tight



0360

0361

0360 Iron-Tuff® Ice Parka

11.25 oz. RefrigiFill™ insulation
 Tear and abrasion-resistant 420 denier nylon outershell
 Water-repellent, wind-tight finish | Reinforced brass rivets at stress points
 Bound seams seal out drafts | Draft-sealing elastic back band
 2 Oversized insulated front pockets and chest pocket
 Pencil pocket on sleeve | Raglan sleeves
 Sewn-on fleece-lined hood with knit wind seal | Thigh length
NEW Heavy-duty brass zipper

Navy | Sage



0360R Reg | S-5XL



0361 Iron-Tuff® WinterSeal®

11.25 oz. RefrigiFill™ insulation
 Tear and abrasion-resistant 420 denier nylon outershell
 Water-repellent, wind-tight finish | Reinforced brass rivets at stress points
 Bound seams seal out drafts
 2 Oversized insulated front pockets and chest pocket
 Pencil pocket on sleeve | Draft-sealing elastic back
 Raglan sleeves | Soft fleece collar | Thigh length

Navy



0361R Reg | S-5XL



0341 Iron-Tuff® Inspector

11.25 oz. RefrigiFill™ insulation
 Tear and abrasion-resistant 420 denier nylon outershell
 Water-repellent, wind-tight finish | Reinforced brass rivets at stress points
 Bound seams seal out drafts
 2 Oversized insulated front pockets and chest pocket
 Knee-length coat | Nylon collar | Adjustable waist belt
 Side seam openings for trouser pocket access
NEW Heavy-duty brass zipper

Navy



0341R Reg | S-5XL





Durable



Water Repellent



Wind-tight



0344

0381

0344 Iron-Tuff® Coveralls

11.25 oz. RefrigiFill™ insulation
 Tear and abrasion-resistant 420 denier nylon outershell
 Water-repellent, wind-tight finish | Reinforced brass rivets at stress points
 Bound seams seal out drafts
 2 Oversized insulated front pockets and chest pocket
 Zipper sleeve pocket with pencil stall | Heavy-duty knit cuffs
 Heel reinforcement patches | Soft fleece collar
 See HiVis version with tape on pg. 47

0344R Reg | S-5XL 0344S Short | S-5XL 0344T Tall | M-5XL

Navy | Sage



0381 Iron-Tuff® Coveralls with Hood

11.25 oz. RefrigiFill™ insulation
 Tear and abrasion-resistant 420 denier nylon outershell
 Water-repellent, wind-tight finish | Reinforced brass rivets at stress points
 Bound seams seal out drafts | Zipper sleeve pocket with pencil stall
 2 Oversized insulated front pockets and chest pocket
 Heel reinforcement patches | Heavy-duty knit cuffs
 Sewn-on fleece-lined hood with knit wind seal

0381R Reg | S-5XL 0381S Short | S-5XL 0381T Tall | M-5XL

Navy | Sage



0081 Iron-Tuff® Snap-On Hood

Tear and abrasion-resistant 420 denier nylon outershell
 Water-repellent, wind-tight finish | Knit wind seal around face
 Self-locking drawstring | Snaps to any Iron-Tuff® jacket or coveralls

0081R | One Size Fits All

Navy | Sage



0399 Iron-Tuff® Vest

11.25 oz. RefrigiFill™ insulation
 Tear and abrasion-resistant 420 denier nylon outershell
 Water-repellent, wind-tight finish
 Bound seams seal out drafts | 2 Insulated front pockets
 Extended length back | Stretch knit side gussets for comfort
 Insulated knit collar | HiVis with reflective tape option available
 See HiVis version with tape on pg. 46
NEW Heavy-duty brass zipper

0399R Reg | S-5XL

Navy | Sage



Core Warmth Why It's Essential

Keeping your core warm is essential to overall body warmth – the warmer your core is, the more blood gets to your extremities. Vests are a versatile layer addition for a range of temperatures and activities to keep your core warm while retaining a full range of motion for your arms.





Durable



Water Repellent



Wind-tight



0385



0345



0386

0385 Iron-Tuff® Bib Overalls

11.25 oz. RefrigiFill™ insulation
 Tear and abrasion-resistant 420 denier nylon outershell
 Water-repellent, wind-tight finish | Reinforced brass rivets at stress points
 Bound seams seal out drafts | 1 Back and 2 insulated front pockets
 High front and back | Adjustable heavy-duty 2" elastic suspenders
 Heel reinforcement patches | **NEW** Heavy-duty brass zipper
 See HiVis version with tape on pg. 47

0385R Reg | S-5XL 0385S Short | S-5XL 0385T Tall | M-5XL

Navy | Sage



0386 Iron-Tuff® Enhanced Visibility Bib Overalls

11.25 oz. RefrigiFill™ insulation
 Tear and abrasion-resistant 420 denier nylon outershell
 Water-repellent, wind-tight finish | Reinforced brass rivets at stress points
 Bound seams seal out drafts | 1 Back and 2 insulated front pockets
 High front and back | Adjustable heavy-duty 2" elastic suspenders
 Heel reinforcement patches | **NEW** Heavy-duty brass zipper
 2" 3M™ Scotchlite™ Reflective Tape around waist and legs

0386R Reg | S-5XL 0386S Short | S-5XL 0386T Tall | M-5XL

Navy



0345 Iron-Tuff® Low Bib Overalls

11.25 oz. RefrigiFill™ insulation
 Tear and abrasion-resistant 420 denier nylon outershell
 Water-repellent, wind-tight finish | Reinforced brass rivets at stress points
 Bound seams seal out drafts | 1 Back and 2 insulated front pockets
 Low front and high back | Adjustable heavy-duty 2" elastic suspenders
 Heel reinforcement patches | **NEW** Heavy-duty brass zipper

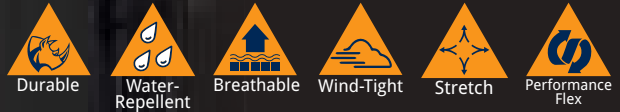
0345R Reg | S-5XL 0345S Short | S-5XL 0345T Tall | M-5XL

Navy | Sage



POLARFORCE™

Staying protected in tough work environments isn't enough – you need to stay productive too. PolarForce™ with Performance-Flex – comfort rated down to -40°F – means you never have to compromise. The wind-tight, water-repellent & breathable outershell plus over 500g of insulating power keep you warm and protected, while Performance-Flex enhances freedom of movement.



Performance-Flex | Work in Freedom

Performance-Flex innovates the way you move in insulated clothing with a ribbed design fabric that expands with your body's movements. Performance-Flex gives you unprecedented mobility at key flex points on your body, like at the elbows, the back/shoulders and underneath your arms.



8140 PolarForce™ Jacket with Performance-Flex

- Over 500g of insulating power
- 100% Polyester comfort stretch microfiber outershell
- Water-repellent, wind-tight & breathable polyurethane membrane
- Tricot laminated silver lining with polyester mesh cover
- Zipper closure with storm flap | 2 Hand warmer zipper pockets
- 2 Chest pockets with waterproof zippers | Inside zipper pocket
- Pencil pocket on left sleeve | Inner draw cord at waist to seal out drafts
- Adjustable outer cuffs with inner cuff seal
- Performance-Flex on elbow, under arm and back for improved movement
- Grip Assist on sleeves | HiVis orange piping

8140R Reg | S-5XL 8140T Tall | M-5XL
Black/Charcoal



Grip Assist on sleeves prevents objects from slipping as you handle them



Tricot laminated silver lining with polyester mesh cover reflects heat to provide additional warmth

POLARFORCE™



Durable



Water-Repellent



Breathable



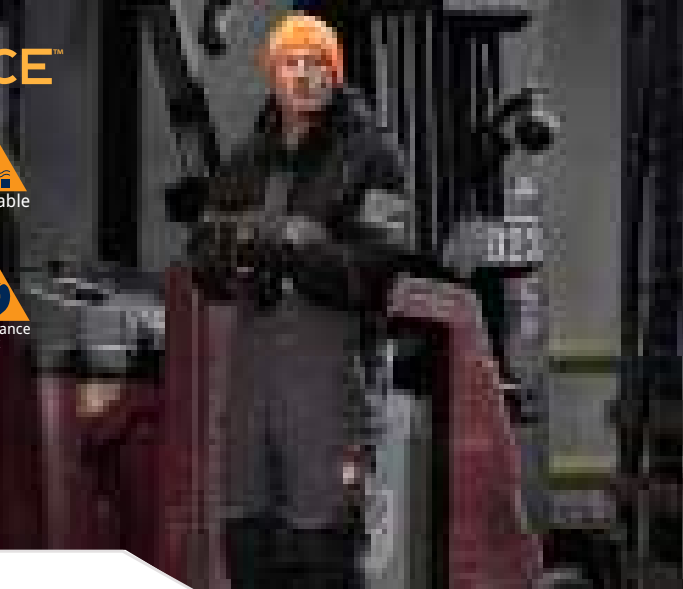
Wind-Tight



Stretch



Performance Flex



Performance-Flex | Work in Comfort

The ribbed design fabric of Performance-Flex allows you to move more freely at the waist and knees in these bib overalls. Performance-Flex is a revolutionary feature that expands as your body stretches, reducing constraints on movement, providing extra room and comfort and allowing your body to move more naturally.



Heel reinforcement patches on entire bottom of leg protects against everyday wear and tear



Tricot laminated silver lining with polyester mesh cover reflects heat to keep you warm

7140 PolarForce™ Bib Overalls with Performance-Flex

- Over 500g of insulating power
- 100% Polyester comfort stretch microfiber outershell
- Water-repellent, wind-tight & breathable polyurethane membrane
- Tricot laminated silver lining with polyester mesh cover
- Zipper closure with storm flap at chest and on legs
- 2 Chest pockets with waterproof zippers
- 2 Hand warmer pockets | 2 Side leg pockets
- Heel reinforcement patches for entire bottom of leg
- Performance-Flex on knees and side waist for improved movement
- HiVis orange piping

7140R Reg | S-5XL 7140T Tall | M-5XL

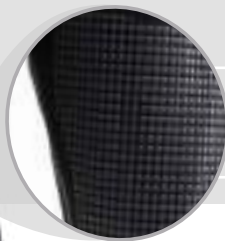
Black/Charcoal



Performance-Flex | Work with More Flexibility



The special ribbed design of Performance-Flex in the PolarForce™ Sweatshirt expands as you bend or extend your elbows, giving you more flexibility and freedom of movement.



Grip Assist on sleeves helps prevent slipping while handling large items



8440 PolarForce™ Sweatshirt with Performance-Flex

3 Layers:

Layer 1: 310g Fleece blend outershell

Layer 2: 120g Polyester insulation

Layer 3: 180g Jersey lining

Pullover with 1/2 zip closure | Kangaroo front pocket
1 Chest zipper pocket | Pencil pocket on left sleeve | Hood
Performance-Flex on elbows for improved movement
Grip Assist on sleeves | Thumb holes in cuff

8440R Reg | S-5XL

Black



Durable

Breathable

Stretch

Performance Flex



1020 PolarForce™ Sock



74% Merino Wool / 24% Nylon / 2% spandex | Arch support
Reinforced stitching in toe and heel
Welted top keeps socks fitting right
Ventilation channels on top of foot for maximum breathability

S/M, L/XL



Breathable

Stretch

Moisture-wicking



6440 PolarForce™ Balaclava



Polartec® fleece outershell | Reflective piping under seams
Can be worn as balaclava or gaiter
Made from recycled materials
S/M, L/XL

Black



9740 PolarForce™ Hybrid Fleece Jacket



400g Polyester bonded fleece outershell
Water-repellent, wind-tight
Abrasion-resistant panels on cuffs, waist and shoulders
2 Zipper hand warmer pockets
Right chest pocket with waterproof zipper | HiVis orange piping

9740R Reg | S-5XL

Black



Wind-tight

Durable



Pre-curved, ergonomic fit

0518 PolarForce™ Glove with Performance-Flex



200g Thinsulate™ plus foam insulation with tricot lining
 Comfort stretch polyester with synthetic leather palm
 Pre-curved, ergonomic fit | Silicone dot Grip Assist pattern on palm
 Performance-Flex knuckle for improved movement
 Neoprene cuff | Kevlar reinforced thumb crotch
 Pinched finger tips for less bulk | HiVis orange piping
 Pull tab with rubber ID tag on wrist
 Touchscreen capability on thumb/forefinger
M, L, XL

Induradex™	
Insulation	9
Durability	7
Dexterity	7

Touchscreen capability on thumb/forefinger



1140 PolarForce™ Max



INSULATION: 800g Thinsulate™ Ultra with added warmth from Dri-Blaze® lining

UPPER: 8" Leather

OUTSOLE: Anti-Slip RefrigiWear®

TOE: ASTM composite

FEATURES: Waterproof

- Performance polyurethane shell
- Lighter weight than most 800g boots
- Rubber heel plate
- Gravity-fed moisture management system
- Electrical hazard compliant

InduraSafe™



Reg 1140CR Full 7-14, Half 8½-11½



*Our exclusive VitaComfort™ system enhances comfort, absorbs shock and increases breathability.



1240 PolarForce™ Hiker



INSULATION: 800g Thinsulate™ Ultra

UPPER: 6" Nylon/ Leather

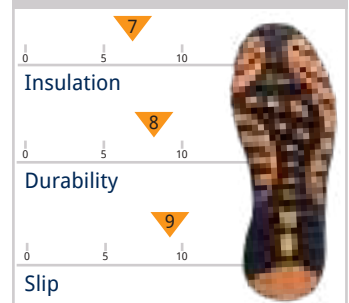
OUTSOLE: Vibram® Q765 Dual Density with IceTrek®

TOE: ASTM composite

FEATURES: Waterproof

- Ankle and heel support
- Rubber toe guard
- HiVis reflective trim
- Gravity-fed moisture management system
- Electrical hazard compliant

InduraSafe™



Reg 1240CR Full 5-13, Half 5½-11½



*Our exclusive VitaComfort™ system enhances comfort, absorbs shock and increases breathability.

ErgoForce® is full of features. The heavy-duty, abrasion-resistant 600 denier polyester outershell is combined with more than 240 grams of insulation and is certified 100% waterproof. Both the jacket and bib overalls provide plenty of storage space with 9 pockets on the jacket and 5 pockets on the bib overalls, as well as reflective piping for enhanced safety in low-light conditions.



Waterproof, breathable and wind-tight exterior for protection from the environment

Reflective piping at the chest and arms for increased visibility

Cell phone pocket on sleeve with flap

Waterproof zippered pocket to protect sensitive items

Side entry hand warmer pockets

Reinforced, insulated knee pads for durability with reflective piping

Knee-length leg zippers



Waterproof wrist pocket

8085 ErgoForce® Low Bib Overalls

240g Insulation

Heavy-duty, abrasion-resistant, 600 Denier polyester outershell
 Rainwear certified 100% waterproof | 4 Front pockets and 1 chest pocket
 Tailored body line with inset waist elastic
 Heel reinforcement patches | Padded, abrasion-resistant knee patches
 Knee-length leg zippers | Removable, adjustable Y-back suspenders
 Reflective piping trim and contrast stitching

8085R Reg | S-4XL 8085T Tall | M-4XL

Black



8042 ErgoForce® Jacket

240g Insulation in body & 200g insulation in sleeves
 Heavy-duty, abrasion-resistant, 600 Denier polyester outershell
 Rainwear certified 100% waterproof
 1 Inside and 8 outside pockets | Tailored sleeve and body lines
 Bi-swing arm with inset panels | Adjustable cuffs
 Storm flap over front zipper | Full zip, stand-up collar
 Reflective piping on chest and sleeves and contrast stitching

8042R Reg | S-4XL 8042T Tall | M-4XL

Black



Freezer Edge

Get the edge that pushes your performance over the top with RefrigiWear's new Freezer Edge Jacket & Bib Overalls. Harsh conditions and subzero temperatures won't stop you from getting the job done. Plus, Freezer Edge keeps you in action and won't fall apart after heavy use like other wannabe brands.



8250 Freezer Edge Jacket



280g 100% Polyester insulation | 100% Polyester ripstop outershell
 Water-repellent, wind-tight | 100% Polyester pongee inner lining
 Zipper closure with snap-close storm flap
 2 Hand warmer pockets | 2 Hidden waist pockets with snap closure
 Flap pocket on right sleeve | 2 Stall pencil pocket on left sleeve
 Chest pocket with pencil stall | Inside right chest pocket
 Fleece-lined fold up collar with closure to seal out drafts | Knit cuffs
 Extended back for more protection | HiVis material for added safety
 3M™ Reflective silver tape across waist and over shoulder
 Teflon® coating for increased soil resistance

8250R Reg | S-5XL

Lime/gray



7250 Freezer Edge Bib Overalls



280g 100% Polyester insulation | 100% Polyester ripstop outershell
 Water-repellent, wind-tight | 100% Polyester pongee inner lining
 Zipper closure with snap-close storm flap
 Knee-high zippers on legs with snap-close storm flaps
 4 pockets, 2 with snap closure | Elastic waist on back
 Heel reinforcement patches
 3M™ Reflective silver tape across waist and legs
 Teflon® coating for increased soil resistance

7250R Reg | S-5XL

Lime/gray



Softshell

You aren't going to find toughness like this anywhere else. Get a modern athletic style with industrial strength protection with the RefrigiWear® Softshell Collection. Softshell is breathable, flexible and less bulky than other materials – so you can get the job done in comfort. Our softshell garments offer protection that works as hard as you do, in modern designs with plenty of functional features.



8490 Insulated Softshell Enhanced Visibility Jacket

NEW PRODUCT

- Over 400g of insulating power
- 100% Polyester comfort stretch microfiber shell
- Water-repellent, breathable polyurethane membrane
- Silver twill reflective lining | 1 Inside and 3 outside zipper pockets
- Full-zip, stand-up collar | Interior draw cord | Adjustable cuffs
- 2" Segmented reflective silver tape at sleeves, chest and back for increased visibility
- Stitchless bonded tape for increased durability

8490R Reg | S-5XL

Black/Charcoal



0490 Insulated Softshell Jacket

- Over 400g of insulating power
- 100% Polyester comfort stretch microfiber shell
- Water-repellent, breathable polyurethane membrane
- Silver twill reflective lining
- 1 Inside and 3 outside zipper pockets | Full zip, stand-up collar
- Interior draw cord | Adjustable cuffs

0490R Reg | S-5XL

Black/Charcoal | Navy/Charcoal



WOMEN'S

Also available in Women's, style 0493. See more on pg. 65

SILVER TWILL REFLECTIVE LINING

Reflecting body heat back to you, silver twill reflective lining is included on many of our softshell garments. This increases their warming power - keeping you protected in colder temps.



7495 Insulated Softshell
Enhanced Visibility Bib Overalls

**NEW
PRODUCT**

Over 400g of insulating power
100% Polyester comfort stretch microfiber shell
Water-repellent, breathable polyurethane membrane
Silver twill reflective lining | 1 Chest and 2 front zipper pockets
Heel reinforcement patches | Y-back heavy-duty suspenders
Abrasion-resistant knee patches
2" Segmented reflective silver tape at chest, back and legs for increased visibility
Stitchless bonded tape for increased durability

7495R Reg | S-5XL

Black



0495 Insulated Softshell Bib Overalls

Over 400g of insulating power
100% Polyester comfort stretch microfiber shell
Water-repellent, breathable polyurethane membrane
Silver twill reflective lining | 1 Chest and 2 front zipper pockets
Heel reinforcement patches | Y-back heavy-duty suspenders
Abrasion-resistant knee patches

0495R Reg | S-5XL

Black



WOMEN'S

Also available in Women's, style 7123.
See more on pg. 65



Softshell



Durable



Water-Repellent



Wind-Tight



Breathable



Stretch



0491 Softshell Jacket

- Over 300g of insulating power
- 100% Polyester comfort stretch microfiber shell
- Water-repellent, breathable polyurethane membrane
- 100% Polyester microfleece lining
- Full lining increases comfort and durability
- 1 Inside and 3 outside zipper pockets | Full zip, stand-up collar
- Adjustable cuffs | Draw cord at bottom

0491R Reg | S-5XL

Black



WOMEN'S

Also available in Women's, style 0498.
See more on pg. 65



9151 Lightweight Softshell Jacket with Hood

- Over 250g of insulating power
- 100% Polyester comfort stretch microfiber outershell
- Water-repellent, wind-tight polyurethane membrane
- 100% Polyester microfleece lining | 2 Hand warmer pockets
- 2 Inside bag pockets | Face-fitting hood with toggle closure
- Adjustable cuffs | Draw cord at bottom

9151R Reg | S-5XL

Black





0492

0494

0492 Insulated Softshell Vest

0494 Softshell Vest

- 0492:** Over 400g of insulating power | Silver twill reflective lining
1 Inside and 3 outside zipper pockets
- 0494:** Over 300g of insulating power
2 Inside bag pockets and 3 outside zipper pockets
- Both:** 100% Polyester comfort stretch microfiber shell
Water-repellent, breathable polyurethane membrane
100% Polyester microfleece lining
Full zip, stand-up collar | Draw cord at bottom

0492R Reg | S-5XL

0494R Reg | S-5XL

Black



9440



9440 Insulated Softshell Pants

9441 Softshell Pants

- 9440:** Over 400g insulating power | Silver twill reflective lining
Heel reinforcement patches for entire bottom of leg
- 9441:** Over 300g insulating power
100% Polyester microfleece lining | Heel reinforcement patches
- Both:** 100% Polyester comfort stretch microfiber shell
Water-repellent, breathable polyurethane membrane
Elastic waist with fly and 2-button snap closure | 2 Hand warmer pockets
Rugged scuff-resistant knee patches
Non-locking zippers on legs with zipper garages
Button snap closure on legs

9440 Reg | S-5XL

9441 Reg | S-5XL

Black



Softshell

High-visibility (HiVis) softshell garments feature the durability, flexibility and warmth of our regular softshells with the added value of enhanced safety in low-light environments. These softshell items feature high-visibility orange and lime colors as well as reflective tape and trims that improve worker safety.



0496 HiVis Insulated Softshell Jacket

- Over 400g of insulating power
- 100% Polyester comfort stretch microfiber shell
- Water-repellent, breathable polyurethane membrane
- Silver twill reflective lining
- 1 Inside and 3 outside zipper pockets | Full zip, stand-up collar
- Interior draw cord | Adjustable cuffs
- ANSI Class 2 compliant | CSA Class 1 Level 1 approved
- 2" Silver reflective tape with X on back
- Stitchless bonded tape for increased durability

0496R Reg | S-5XL

Black/Orange | Black/Lime



9291 HiVis Softshell Jacket

- Over 300g of insulating power
- 100% Polyester comfort stretch microfiber outershell
- Water-repellent, wind-tight & breathable polyurethane membrane
- 100% Polyester tricot & taffeta lining | 2 Hand warmer zipper pockets
- 1 Chest pocket | 1 Inside zipper pocket | Adjustable cuffs
- Draw cord at bottom | ANSI Class 2 compliant
- 2" Silver reflective tape | Reflective X on back
- Stitchless bonded tape for increased durability

9291R Reg | S-5XL

Black/Lime





0497 HiVis Insulated Softshell Bib Overalls

Over 400g of insulating power | 100% Polyester microfiber shell
 Water-repellent, breathable polyurethane membrane
 Silver twill reflective lining
 1 Chest and 2 front zipper pockets | Heel reinforcement patches
 Y-back heavy-duty suspenders | Rugged scuff-resistant knee patches
 ANSI E Class compliant | 2" Silver reflective tape
 Stitchless bonded tape for increased durability

0497R Reg | S-5XL

Black/Orange | Black/Lime



9499 HiVis Reversible Softshell Vest

Over 300g of insulating power
HiVis orange shell: 100% Polyester microfiber
 ANSI Class 2 compliant | 2" Silver reflective tape
Black shell: 100% Polyester 270g microfleece
 Water-repellent, breathable membrane
 2 Hand warmer pockets on each side | Full zip, stand-up collar

9499R Reg | S-5XL

Orange/Black Reversible



ComfortGuard®

Our ComfortGuard® is as tough as the environment you work in. The durable outershell can take a beating and still keep you warm and active.



Durable



Water Repellent



Wind-tight

0620 ComfortGuard® Service Jacket

7.5 oz. Polyester fiberfill insulation | 100% Cotton denim outershell
Wind-tight, water-repellent finish | 2 Oversized front pockets
2 Inside pockets | Pencil pocket on sleeve
Insulated hood with draw cord | Reinforced brass rivets at stress points
Rib-knit waistband and cuffs

0620R Reg | S-4XL

Black



0630 ComfortGuard® Utility Jacket

7.5 oz. Polyester fiberfill insulation | 100% Cotton denim outershell
Wind-tight, water-repellent finish | 2 Chest and 2 oversized front pockets
2 Inside pockets | Pencil pocket on sleeve | Hip length
Storm flap over zipper | Reinforced brass rivets at stress points
Inset heavy-duty knit cuffs

0630R Reg | S-4XL 0630T Tall | L-4XL

Black





Durable



Water Repellent



Wind-tight

The cotton denim outershell of ComfortGuard® is wind-tight and water-repellent and durable – we’re talking “give us your best shot” tough.



0640 ComfortGuard® Coveralls

7.5 oz. Polyester fiberfill insulation | 100% Cotton denim outershell
 Wind-tight, water-repellent finish
 2 Front hand warmer pockets and 2 back pockets
 2 Chest zipper pockets | Pencil pocket on sleeve
 Hip length two-way leg zippers | Interior waist draw cord
 Reinforced brass rivets at stress points | Tool loop on hip

0640R Reg | S-5XL 0640T Tall | M-4XL

Black



0685 ComfortGuard® Bib Overalls

7.5 oz. Polyester fiberfill insulation | 100% Cotton denim outershell
 Wind-tight, water-repellent finish
 2 Front hand warmer pockets and 2 back pockets
 2 Chest zipper pockets | Hip length two-way leg zippers
 Adjustable heavy-duty 2" elastic suspenders | Interior waist draw cord
 Tool loop on hip

0685R Reg | S-4XL 0685T Tall | M-4XL

Black



ChillBreaker® Plus



Durable



Water Repellent



Wind-tight

A modern, stylish design with the ultimate functionality, ChillBreaker® Plus offers protection down to 0°F. The ChillBreaker® Plus Jacket and Bib Overalls are versatile and functional, featuring the durability of the rest of the ChillBreaker® Collection, plus a multitude of pockets and features designed to keep you warm and protected.



Features

420D Ripstop outershell with water-repellent, wind-tight & breathable coating

Full zip with hidden-snap storm flap

Pencil pocket on left sleeve

2 Chest pockets with waterproof zippers

4 Hidden-snap bag pockets

2 Side entry hand warmer pockets

Adjustable sleeve with inset knit cuff and thumb hole

8050 ChillBreaker® Plus Jacket

- 180g 100% Polyester diamond box quilt fiberfill insulation
- 100% Polyester 420D ripstop outershell
- Water-repellent, wind-tight & breathable coating
- 100% Polyester taffeta lining | Zipper closure with hidden-snap storm flap
- 4 Hidden-snap bag pockets on front | 2 Hand warmer pockets
- 2 Chest pockets with waterproof zippers
- 2 Inside zipper pockets | 2 Inside bag pockets | 2 inside micro pockets
- 2 Stall pencil pocket on left sleeve | Elastic waistband inside jacket
- Adjustable sleeves with inset knit cuff with thumb hole
- Reflective piping accents

8050R Reg | S-5XL

Royal Blue/Black



A total of 13 pockets means you have ample storage for tools and job necessities



2 Waterproof front pockets to protect valuables



Full zip closure with a hidden-snap storm flap protects against drafts



Durable



Water Repellent



Wind-tight

Features

Adjustable 2" elastic suspenders

420D Ripstop outershell with water-repellent, wind-tight & breathable coating

1 x 1 rib-knit side gusset for added stretch

2 Side entry hand warmer pockets

Articulated, scuff-resistant knees

Waist high leg zippers for easy on/off and access to base layers

Heel reinforcement patches



6060 ChillBreaker® Plus Cap



100% Acrylic knit
Reflective yarn woven into cap for added safety

Blue/Black



7050 ChillBreaker® Plus Bib

180g 100% Polyester diamond box quilt fiberfill insulation
100% Polyester 420D ripstop outershell
Water-repellent, wind-tight & breathable coating
100% Polyester taffeta lining | Zipper closure with hidden-snap storm flap
2 Hand warmer pockets | 2 Chest pockets with waterproof zippers
2 bag pockets | Waist-high leg zippers | Heel reinforcement patches
Rugged scuff-resistant knee patches over articulated knee
Adjustable 2" suspenders
1 x 1 Rib-knit side gusset for added stretch | Reflective piping accents

7050R Reg | S-5XL

Royal Blue/Black



Waist high zippers offer temperature control, provide access to base layers and allow for easy on / off



Articulated, scuff-resistant knees keep the bib flexible while withstanding everyday wear and tear



1 x 1 Rib-knit side gusset adds stretch for the perfect fit and better movement

RefrigiWear's® original ChillBreaker® collection packs a lot of features into lighter weight garments that are perfect for coolers and cold outdoor conditions. Each garment is water-repellent, offers freedom of movement and has plenty of convenient pockets.



0442 ChillBreaker® Parka

7.5 oz. Polyester fiberfill insulation | 100% Taslon nylon 3-ply outershell
Wind-tight, water-repellent finish | 4 Front and 2 chest pockets
1 Inside zipper pocket | Storm flaps cover front zippers
Hip length | Interior waist draw cord | Soft fleece-lined collar

0442R Reg | S-5XL

Navy



0450 ChillBreaker® Jacket

5.5 oz. Multi-season insulation
100% Polyester microfiber 3-ply outershell
Wind-tight, water-repellent finish | 1 Inside and 2 outside pockets
Storm flaps cover front zippers
Rib-knit cuffs and waistband | Soft fleece-lined collar

0450R Reg | S-5XL

Navy | Black



0440 ChillBreaker® Coveralls

7.5 oz. Polyester fiberfill insulation | 100% Taslon nylon 3-ply outershell
Wind-tight, water-repellent finish | 2 Front and 2 back pockets
2 Chest zipper pockets | Storm flaps cover front zippers
Hip length two-way leg zippers | Elastic waist and interior waist draw cord
Soft fleece-lined collar | Tool loop on hip

0440R Reg | S-5XL

Navy



0485 ChillBreaker® Bib Overalls

7.5 oz. Polyester fiberfill insulation | 100% Taslon nylon 3-ply outershell
Wind-tight, water-repellent finish | 2 Front and 2 back pockets
2 Chest zipper pockets | Storm flaps cover front zippers
Hip length two-way leg zippers
Adjustable heavy-duty 2" elastic suspenders
Elastic waist and interior waist draw cord
Tool loop on hip

0485R Reg | S-5XL

Navy



COLD TIPS

10 TIPS TO STAY WARM AND SAFE FOR INDOOR + OUTDOOR WORKERS

Our clothing keeps you warm, safe and productive in cold environments but choosing the right clothing is only part of the process. To make it simple, here are 10 cold facts that can help you stay warm.

CHOOSE CLOTHES ACCORDING TO YOUR ACTIVITY LEVEL.

More active = less insulation
Less active = more insulation



DRINK MORE WATER, LESS CAFFEINE

Caffeine can cause dehydration so you need lots of water to stay warm.



EAT MORE

When working in cold temperatures, you should average at least 2,400 calories and up to 4,000 calories per day.



DON'T WEAR CLOTHING THAT IS TOO TIGHT OR TOO LOOSE

Insulated clothing or layers should fit comfortably and also help seal out drafts.



PAY ATTENTION TO YOUR BODY

Get out of the cold if you experience extreme drowsiness, loss of balance, extreme shivering or slower breathing.



AVOID PERSPIRATION BUILD UP

Stay dry to maintain warmth. Moisture can prevent you from staying warm so look for moisture wicking layers.



PROTECT BARE SKIN

Cover all areas that will be exposed to cold temperatures or wind.



LAYER CLOTHING

A good inner layer insulates and wicks moisture away from the skin. The outer layer continues the wicking process and insulates by preventing body heat from escaping.



DON'T SMOKE OR DRINK ALCOHOL

Nicotine and alcohol affect the body's ability to regulate and conserve heat, especially in your extremities.



WEAR REFRIGIWEAR® GARMENTS!

RefrigiWear® offers head-to-toe protection for a variety of temperatures and activity levels.



Learn more at
refrigiwear.com/coldtips

Arctic Duck®

Comfort, versatility and supreme durability are the main characteristics of RefrigiWear's® Arctic Duck® line. But these only begin to describe gear with many features that make them perfect for working in cold environments. From heavy-duty zippers and an array of useful pockets to the warm Sherpa lining, Arctic Duck® garments are some of the most functional and durable you will ever find.



0332 Arctic Duck® Jacket with Hood

10 oz. Sherpa pile interior | 120g Sleeve insulation
 100% Cotton double-fill Duck® with wind-tight, water-repellent Teflon® coating
 Hood with Sherpa lining | Extended back for draft protection
 2 Chest pockets | 2 Hand warmer pockets
 2 Inside pockets (1 zip, 1 hook & loop closure)
 Built-in pencil pocket | Inset sleeve cuff
 Bi-swing back design for more maneuverability | YKK brass front zipper
 Inside waist seal for draft protection

0332R Reg | S-5XL

Brown



0335 Arctic Duck® Bib Overalls

10 oz. Sherpa pile interior | 120g leg insulation
 100% Cotton double-fill Duck® with wind-tight, water-repellent Teflon® coating
 Adjustable suspenders with press button to connect buckle
 2 Hand warmer pockets | 2 Front chest pockets
 2 Dual-snap back pockets | Tool pocket on right leg
 Radio clip on left chest | Brass zippers on legs
 Heel reinforcement patches for entire bottom of leg
 Reinforced brass rivets

0335R Reg | S-5XL

Brown



Diamond Quilted

Our Diamond Quilted Jackets combine extra durability with fashionable style, creating garments that can be worn inside and outside of work. Stay warm and productive with these versatile, functional jackets.



Durable



Water Repellent



Wind-tight



Lightweight



8705 Lightweight Diamond Quilted Jacket

180g Insulation | 100% Polyester microfiber outershell
 Water-repellent and wind-tight | Diamond pattern shell
 2 Hand warmer pockets | 2 Inside bag pockets
 Bound seams seal out drafts
 Orange lining inside jacket and pockets

8705R Reg | S-5XL

Black



0444 Diamond Quilted Jacket

380g Insulation | 100% Polyester pongee outershell
 Water-repellent and wind-tight | Diamond pattern shell
 Large chest zipper pocket | 2 Hand warmer pockets
 Set-in cuffs | 2 interior pockets | Stand-up, fleece-lined collar

0444R Reg | S-5XL

Black





Cooler Wear™ serves as a lightweight solution for temperatures down to 10°F. The collection offers a smart option for those working in less frigid temperatures, like on processing floors or in coolers. The heavy-duty ripstop outershell ensures long-lasting durability.



0525 Cooler Wear™ Jacket

7.5 oz. Polyester fiberfill insulation
Water-repellent, ripstop coated nylon outershell
2 Outside front insulated pockets | Insulated knit collar
Storm flap over zipper

0525R Reg | S-5XL

Blue



0599 Cooler Wear™ Vest

7.5 oz. Polyester fiberfill insulation
Water-repellent, ripstop coated nylon outershell
2 Outside insulated pockets | 1 Chest insulated pocket
Extended length back | Stretch knit side gussets for comfort
Insulated knit collar

0599R Reg | S-5XL

Blue



Features

Industrial Strength

Every product RefrigiWear® manufactures is crafted for industrial use, giving you a durable garment that's going to stand up to tough work environments with heavy-duty ripstop outershells. Our cost-efficient Econo-Tuff® and Cooler Wear™ product lines keep you warm and protected in tough working conditions, and are a great value.



0534 Cooler Wear™ Frock Liner

7.5 oz. Polyester fiberfill insulation
Water-repellent, ripstop coated nylon outershell
2 Clipboard-sized front pockets
Side seam openings for trouser pocket access
Insulated knit collar | Snap-front closure
Fits under frocks or lab coats

0534R Reg | S-5XL

Blue



0526 Cooler Wear™ Trousers

7.5 oz. Polyester fiberfill insulation
Water-repellent, ripstop coated nylon outershell
Full elastic waist | Snap-front fly opening
Rib ankle cuffs

0526R Reg | S-5XL

Blue





Lightweight, warm, durable and a great value — Econo-Tuff® garments provide the best of all worlds. The 6 oz. polyester fiberfill helps protect you down to 15°F, while features like knit cuffs help seal out the cold. The outershell is made from tough denier polyester for increased resilience to rips or tears.



0925 Econo-Tuff® Jacket

6 oz. Polyester fiberfill insulation
Durable 200 denier polyester outershell
2 Outside front insulated pockets | 1 Inside pocket
Insulated knit collar

0925R Reg | S-5XL

Navy



B925 Cooler Essentials Jacket

11.25 oz. RefrigiFill™ insulation
Water-repellent, ripstop coated nylon outershell
No pockets to prevent shrinkage
Knit collar and cuffs
Perfect for processing, protein, cooler environments, loading docks and more

B925R Reg | S-6XL

Black



0985 Econo-Tuff® Bib Overalls

6 oz. Polyester fiberfill insulation
Durable 200 denier polyester outershell
2 Insulated front pockets
High front and back | Adjustable 2" heavy-duty suspenders
Knee-length zippers

0985R Reg | S-5XL

Navy



0934 Econo-Tuff® Frock Liner

6 oz. Polyester fiberfill insulation
Durable 200 denier polyester outershell
2 Clipboard-sized front pockets
Side seam openings for trouser pocket access
Insulated knit collar | Snap-front closure
Fits under frocks or lab coats

0934R Reg | S-5XL

Navy



0912 Econo-Tuff® Vest

6 oz. Polyester fiberfill insulation
Durable 200 denier polyester outershell
2 Outside insulated pockets | Insulated knit collar

0912R Reg | S-5XL

Navy



3-in-1 Jackets

1 INNER JACKET
when it's dry

2 WATERPROOF SHELL
when it's wet

3 BOTH
when it's wet and cold

RainWear



Waterproof



Wind-tight



Lightweight



Breathable



The 0431 inner jacket can be worn on its own in cooler conditions.

0431 3-in-1 Insulated Rainwear Jacket

Outer Jacket:

100% Polyester waterproof, breathable outershell
Silver reflective stripe | Detachable hood can be tucked into jacket
Adjustable straps on sleeves | Taffeta inner lining
Brushed tricot 100% polyester for pocket bags | Fleece lining in collar
Waterproof zipper on front, two coil hand warmer pockets

Inner Jacket:

160g Polyester insulation | Polyester outershell
Brushed tricot 100% polyester for pocket bags | Inside storm flap

Trim/Other Components:

Elastic drawcord with adjustable toggles inside jacket
(Inner jacket and on the hood of the outer jacket)

0431R Reg | S-5XL

Black



9190 Lightweight Rainwear Jacket

100% Polyester waterproof, wind-tight & breathable outershell
Taffeta lining in sleeves | YKK front zipper with storm flap
Waterproof right chest pocket | 2 Hand warmer pockets
1 Inside pouch pocket | Detachable hood | Adjustable cuffs
Premium quality rainwear designed for the best comfort and protection

9190R Reg | S-5XL

Black



RainWear



Lightweight, windtight and breathable

9175 HiVis Rainwear Jacket



- 100% Polyester waterproof, wind-tight & breathable outershell
- Waterproof zipper closure with storm flap
- 2 Hand warmer zipper pockets with flaps
- Chest pocket with zipper and flap
- Adjustable hood that rolls into collar for storage
- Comfortable Neoprene cuff to seal out water
- Adjustable cuffs for added comfort
- 3/4" Reflective tape on chest | 2" Reflective tape on back

9175R Reg | S-5XL

Lime



Neoprene cuff for comfort and better seal

Reflective Tape on Back



Folds easily into compact bag for storage

9170 HiVis Lightweight Rainwear Jacket

- 50% PU / 50% PVC waterproof, wind-tight outershell
- Polyester mesh lining | Snap close storm flap | 2 Hand warmer pockets
- Hood tucks in for storage
- 2" Silver reflective tape | Reflective X on back
- Stitchless bonded tape for increased durability | Ansi class 3 compliant

9170R Reg | S-5XL

Lime



0195 Midweight Rainwear Set

- 100% Polyester with waterproof, breathable coating
- Taffeta lined | Jacket and pants set | Adjustable cuffs
- Vent flap on back and vent holes under arms for breathability
- Adjustable waist cord | 2 Pants pockets | Snaps at each leg
- Barrel lock at hood for secure fit | Hood rolls into collar
- Comes in bag for easy storage

0195R Reg | S-5XL

Orange | Lime



HiVis

RefrigiWear® offers a wide range of high-visibility (HiVis) garments as well as handwear, footwear and headwear with HiVis accents because we know that absolutely nothing comes before the safety of your workforce. Many stock garments can also be customized to include reflective tape. Please contact our Customer Service Team for customized garment requests at 800.645.3744.

ANSI CLASS 1	ANSI CLASS 2	ANSI CLASS 3
Lowest Risk Conditions	Moderate Risk Conditions	Highest Risk Conditions
<ul style="list-style-type: none"> Workers away from road traffic, like in warehouses or on loading docks Traffic traveling less than 25 mph Requires the minimum amount of background HiVis (217in) and reflective tape (155in) materials 	<ul style="list-style-type: none"> Workers are on or near roadway, like construction workers or drivers in distribution yards Traffic traveling less than 50 mph Requires more background HiVis (755in) and reflective (201in) materials 	<ul style="list-style-type: none"> Workers in high-traffic areas, like road crews or drivers on the side of roadways Traffic is traveling more than 50 mph or possibly less if low visibility conditions are probable, such as at night or in bad weather Requires most background HiVis (1,240in) and retroreflective (310in) materials



The ANSI classification of a garment is determined by:

The amount of **background material** (HiVis Orange or Lime)

The amount of **reflective material** and its placement

ANSI CLASS E

Class E ("Ensemble") garments don't meet ANSI guidelines when worn alone but increase visibility when paired with other ANSI certified items. Class E garments are generally shorts, pants and bibs. Pairing a Class E garment with a Class 2 garment makes the entire ensemble Class 3.



0399 Iron-Tuff® Vest

- 11.25 oz. RefrigiFill™ insulation
- Tear and abrasion-resistant 300 denier polyester outershell
- Water-repellent, wind-tight finish | ANSI Class 2 compliant
- Bound seams seal out drafts | 2 Insulated front pockets
- Extended length back | Stretch knit side gussets for comfort
- Insulated knit collar | 2" 3M™ Scotchlite™ reflective tape
- Reflective X on back

Orange | Lime

0399R Reg | S-5XL





0342RHV



0342RTLN

0342HV HiVis Iron-Tuff® Jackcoat®

11.25 oz. RefrigiFill™ insulation | 300 Denier polyester outershell
 Bound seams seal out drafts | ANSI Class 3 compliant
 Oversized insulated pockets | Sleeve pocket with pencil stall
 Draft-sealing elastic back band | Double-slide two-way zipper
 Reinforced brass rivets at stress points | Soft fleece collar
 Snaps for 0081HV Hood | 2" 3M™ Scotchlite™ reflective tape
 Reflective X on back

0342RHV Reg | S-5XL 0342THV Tall | M-5XL

*Jackcoat™ in size small meets ANSI Class 2 Requirements

Orange | Lime



0342T HiVis Iron-Tuff® Two-Tone Jackcoat®

11.25 oz. RefrigiFill™ insulation | 70% Nylon/30% Polyester outershell
 Bound seams seal out drafts | ANSI Class 2 compliant
 Oversized insulated pockets | Draft-sealing elastic back band
 Double-slide two-way zipper | Reinforced brass rivets at stress points
 2" 3M™ Scotchlite™ reflective tape | Soft fleece collar
 Reflective X on back

0342RT Reg | S-5XL 0342TT Tall | M-5XL

Orange/Navy | Lime/Navy



Please allow two weeks for production of made-to-order garments.

0385HV HiVis Iron-Tuff® Bib Overalls

11.25 oz. RefrigiFill™ insulation | 300 Denier polyester outershell
 Bound seams seal out drafts | ANSI Class E compliant
 1 Back and 2 insulated front pockets | High front and back
 Adjustable heavy-duty 2" elastic suspenders
 Reinforced brass rivets at stress points
 2" 3M™ Scotchlite™ reflective tape

0385RHV Reg | S-5XL 0385SHV Short | M-5XL 0385THV Tall | M-5XL

Orange | Lime



0344HV HiVis Iron-Tuff® Coveralls

11.25 oz. RefrigiFill™ insulation | 300 Denier polyester outershell
 Bound seams seal out drafts | ANSI Class 3 compliant
 2 Oversized insulated front pockets | Heavy-duty knit cuffs
 Reinforced brass rivets at stress points | Soft fleece collar
 Snaps for 0081HV | 2" 3M™ Scotchlite™ reflective tape

0344RHV Reg | S-5XL 0344THV Tall | M-5XL

Orange | Lime



Please allow two weeks for production of made-to-order garments.

0385HV



0344HV

HiVis Extreme Softshell -60°F

The HiVis Extreme Softshell was designed for the toughest conditions. When your job needs extra warmth in a low visibility environment, you need the added safety of the High Visibility Extreme Softshell line. All the toughness of the Extreme Softshell with the added benefits of HiVis material and reflective tape.



Durable



Water Repellent



Breathable



Wind-tight



ANSI

0796 HiVis Extreme Softshell Jacket

Over 600g insulating power
100% Polyester comfort stretch microfiber shell
Water-repellent, breathable polyurethane membrane
2 Hand warmer zipper pockets
Waterproof zippers on chest and sleeve pockets | Pencil pockets on left sleeve
Dual front zipper system to regulate temperature
Adjustable inner waist seal for draft protection
Adjustable cuffs | Improved wind seal with inset thumbhole cuffs
ANSI Class 3 compliant | CSA Z96 Approved
2" Silver reflective tape with X shape on back
Stitchless bonded tape for increased durability

Lime



0796R Reg | S-5XL



0797 HiVis Extreme Softshell Bib Overalls

Over 600g insulating power
100% Polyester comfort stretch microfiber shell
Water-repellent, breathable polyurethane membrane
2 Hand warmer pockets | Waterproof zipper on chest pocket
Adjustable waist and bottom legs | Rugged scuff-resistant knee patches
Higher front and back improve torso coverage
Heel reinforcement patches | Adjustable suspenders
ANSI Class E compliant | 2 Rows of 2" silver reflective tape
Stitchless bonded tape for increased durability

Lime



0797R Reg | S-5XL



HiVis Softshell -20°F to 20°F

High-visibility (HiVis) softshell garments feature the durability, flexibility and warmth of our regular softshells with the added value of enhanced safety.



0496HV

9291HV

0496 HiVis Insulated Softshell Jacket

Over 400g of insulating power | 100% Polyester comfort stretch microfiber shell
Water-repellent, breathable polyurethane membrane
Silver twill reflective lining
1 Inside and 3 outside zipper pockets | Full zip, stand-up collar
Interior draw cord | Adjustable cuffs
ANSI Class 2 compliant | CSA Class 1 Level 1 approved
2" Silver reflective tape
Stitchless bonded tape for increased durability

0496R Reg | S-5XL

Orange/Black | Lime/Black



9291 HiVis Softshell Jacket

Over 300g of insulating power
100% Polyester comfort stretch microfiber outershell
Water-repellent, wind-tight & breathable polyurethane membrane
100% Polyester tricot & taffeta lining | 2 Hand warmer zipper pockets
1 Chest pocket | 1 Inside zipper pocket | Adjustable cuffs
Draw cord at bottom | ANSI Class 2 compliant
2" Silver reflective tape | Reflective X on back
Stitchless bonded tape for increased durability

9291R Reg | S-5XL

Black/Lime



0497 HiVis Insulated Softshell Bib Overalls

Over 400g of insulating power | 100% polyester microfiber shell
Water-repellent, breathable polyurethane membrane
Silver twill reflective lining
1 Chest and 2 front zipper pockets | Heel reinforcement patches
Y-back heavy-duty suspenders | Rugged scuff-resistant knee patches
ANSI E Class compliant | 2" Silver reflective tape
Stitchless bonded tape for increased durability

0497R Reg | S-5XL

Orange/Black | Lime/Black



9499 HiVis Reversible Softshell Vest

Over 300g of insulating power
HiVis orange shell: 100% Polyester microfiber
ANSI Class 2 compliant | 2" Silver reflective tape
Black shell: 100% Polyester 270g microfleece
Water-repellent, breathable membrane
2 Hand warmer pockets on each side | Full zip, stand-up collar

9499R Reg | S-5XL

Orange/Black Reversible



Freezer Edge -30°F

Get the edge that pushes your performance over the top with RefrigiWear's new Freezer Edge Jacket & Bib Overalls. Harsh conditions and subzero temperatures won't stop you from getting the job done. Plus, Freezer Edge keeps you in action and won't fall apart after heavy use like other wannabe brands.



8250 Freezer Edge Jacket



280g 100% Polyester insulation | 100% Polyester ripstop outershell
 Water-repellent, wind-tight | 100% Polyester pongee inner lining
 Zipper closure with snap-close storm flap
 2 Hand warmer pockets | 2 Hidden waist pockets with snap closure
 Flap pocket on right sleeve | 2 Stall pencil pocket on left sleeve
 Chest pocket with pencil stall | Inside right chest pocket
 Fleece-lined fold up collar with closure to seal out drafts | Knit cuffs
 Extended back for more protection | HiVis material for added safety
 3M™ Reflective silver tape across waist and over shoulder
 Teflon® coating for increased soil resistance

8250R Reg | S-5XL

Lime/gray



7250 Freezer Edge Bib Overalls



280g 100% Polyester insulation | 100% Polyester ripstop outershell
 Water-repellent, wind-tight | 100% Polyester pongee inner lining
 Zipper closure with snap-close storm flap
 Knee-high zippers on legs with snap-close storm flaps
 4 pockets, 2 with snap closure | Elastic waist on back
 Heel reinforcement patches
 3M™ Reflective silver tape across waist and legs
 Teflon® coating for increased soil resistance

7250R Reg | S-5XL

Lime/gray



HiVis RainWear



Waterproof



Wind-tight



Lightweight

Lightweight, windtight and breathable

9175 HiVis Rainwear Jacket



- 100% Polyester waterproof, wind-tight & breathable outershell
- Waterproof zipper closure with storm flap
- 2 Hand warmer zipper pockets with flaps
- Chest pocket with zipper and flap
- Adjustable hood that rolls into collar for storage
- Comfortable Neoprene to seal out water
- Adjustable cuffs for added comfort
- 3/4" Reflective tape on chest | 2" Reflective tape on back

9175R Reg | S-5XL

Lime

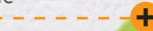
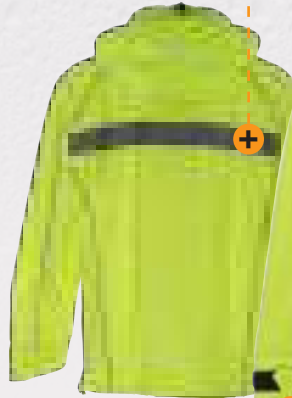


Breathable



Neoprene cuff for comfort and better seal

Reflective Tape on Back



Folds easily into compact bag for storage



9170 HiVis Lightweight Rainwear Jacket

- 50% PU / 50% PVC waterproof, wind-tight outershell
- Polyester mesh lining | Snap close storm flap | 2 Hand warmer pockets
- Hood tucks in for storage
- 2" Silver reflective tape | Reflective X on back
- Stitchless bonded tape for increased durability | ANSI class 3 compliant

9170R Reg | S-5XL

Lime



ANSI

0195 Midweight Rainwear Set

- 100% Polyester with waterproof, breathable coating
- Taffeta lined | Jacket and pants set | Adjustable cuffs
- Vent flap on back and vent holes under arms for breathability
- Adjustable waist cord | 2 Pants pockets | Snaps at each leg
- Barrel lock at hood for secure fit | Hood rolls into collar
- Comes in bag for easy storage

0195R Reg | S-5XL

Orange | Lime



Breathable



170g Quilted polyester
fiberfill insulation
180g Jersey lining

0488 Insulated Quilted Sweatshirt

Pre-shrunk fabric | Large front pockets | Full front zipper closure | Hood

Layer 1: 310g Fleece blend outershell
Layer 2: 170g Quilted polyester fiberfill insulation
Layer 3: 180g Jersey lining

0488R Reg | S-5XL

Lime



0484 HiVis Hooded Sweatshirt

ANSI Class 2 compliant | 310g Outershell
100% Polyester outershell
2 Large front pockets | 2" Silver reflective tape
Full front zipper closure | Hood
Stitchless bonded tape for increased durability
Reflective X on back

0484R Reg | S-5XL

Lime



9640 HiVis Performance Shirt



ANSI Class 2 compliant
92% Polyester / 8% Spandex stretch ripstop fabric
Wind-tight with UV protection
Button down collar with black buttons | 2" Reflective tape
4 Chest pockets: 2 button closure, 1 magnetic, 1 zipper
Vented at top for breathability
Perfect for transportation professionals

8640R Reg | M-5XL

Lime/Black





Back

9040

9040 HiVis Long Sleeve with Tape

NEW PRODUCT

ANSI Class 3 compliant | 100% Polyester
UV protection
Crew neck and rib knit cuffs | Tag free comfort
2" Reflective tape on sleeves, front and back
Stitchless bonded tape for increased durability
Designed for everyday wear

9040R Reg | M-5XL

Lime



9045

9045 HiVis Long Sleeve

NEW PRODUCT

100% Polyester | UV protection
Crew neck and rib knit cuffs | Tag free comfort
Pocket on left chest | Designed for everyday wear

9045R Reg | M-5XL

Lime



9035 HiVis Short Sleeve

NEW PRODUCT

100% Polyester | UV protection
Crew neck | Tag free comfort | Pocket on left chest
Designed for everyday wear

9035R Reg | M-5XL

Lime



Back

9035

9030 HiVis Short Sleeve with Tape

NEW PRODUCT

ANSI Class 2 compliant | 100% Polyester
UV Protection | Crew neck | Tag free comfort
2" Reflective heatseal tape on front and back
Stitchless bonded tape for increased durability
Designed for everyday wear

9030R Reg | M-5XL

Lime



9030



8980 HiVis Short Sleeve Vest

NEW PRODUCT

ANSI Class 3 compliant | 100% Polyester mesh
 2" Silver reflective tape with orange trim
 Zipper closure | Left and right radio loops
 2 Chest pockets, one with pencil pocket
 2 front pockets with hook & loop closure

8980R Reg | M-5XL

Lime



8985 Performance HiVis Vest

NEW PRODUCT

ANSI Class 2 compliant | 100% Polyester mesh
 2" Silver reflective tape with orange trim
 Zipper closure | Left and right radio loops
 2 Chest pockets, one with pencil pocket
 2 front pockets with hook & loop closure

8985R Reg | M-5XL

Lime



Back



0197 Break Away Mesh Safety Vest

ANSI Class 2 compliant | Mesh fabric
 Secure closure with hook & loop closure
 2" Silver reflective tape over shoulders and waist
 5 Point break away vest | 1 Bottom, right outside pocket
 1 Chest, left inside pocket | Reflective X on back

0197R Reg | M-5XL

Orange | Lime



*Choose a size up when wearing over jackets

Back



0198 Zipper Mesh Safety Vest

ANSI Class 2 compliant | Secure zip-front closure | Mesh fabric
 2" Silver reflective tape over shoulders and waist
 4 pockets with hook & loop closure
 Reflective X on back

0198R Reg | M-5XL

Orange | Lime



*Choose a size up when wearing over jackets

Back



0199 Mesh Safety Vest

ANSI Class 2 compliant | Mesh fabric
 2" Silver reflective tape over shoulders and waist
 Secure closure with hook & loop closure
 Reflective X on back

0199R Reg | M-5XL

Orange | Lime



*Choose a size up when wearing over jackets

Stay Professional with Custom Embroidery

RefrigiWear has an in-house team at our Dahlonega, GA location to help you customize any of your RefrigiWear products. We offer direct embroidery, patches and heat-seal. Best of all, we deliver high-quality products because we control every stage of the process. Here are some reasons embroidery may be great for your business.



First Impressions Count

A company logo on apparel **adds professionalism** and helps reinforce your brand with customers. Transform a shirt or hat from a piece of clothing into a uniform with the addition of your logo or a name, and **create a lasting, professional impression with customers.**

Create Advertising with Every Employee

Your company is always on display when your employees have your logo on their jackets, hats or shirts, promoting your company to everyone they meet.

It Can Be Used on Multiple Products

With options like direct embroidery, heat-seal or embroidered patches, you can **display your logo on an entire uniform**, from jackets and shirts to knit caps, ball caps, rain jackets and other items.

Add a Sense of Team Unity

Whether in sports or business, **a team's apparel helps them identify.** The moment they are given a jacket or hat with logo, employees shift from a "them" to "us" mindset, generating a team mentality.

It Makes Our Products Yours

You get to make products your own when you add a logo, name, department, title or other type of embroidery. The possibilities are endless! You can truly create custom uniforms with our in-house services.

Fleece & Sweatshirts

Fleece and sweatshirts are versatile and comfortable garments that make layering for changing conditions easy. Working as either a mid-layer in very cold temperatures or as an outer layer in more moderate temperatures, sweatshirts and fleece give you more options for creating the perfect protection so you can focus on the job, not discomfort.



8480 Extreme Hybrid Sweatshirt with Performance-Flex



- Layer 1:** 390g Polyester knit outershell
- Layer 2:** 120g Quilted polyester fiberfill insulation
- Layer 3:** 120g Jersey blend

- Pullover with waterproof 1/2 zip closure
- Kangaroo front pocket with rivet reinforcements
- Right chest pocket with waterproof zipper
- Left forearm pocket with waterproof zipper
- 2 Stall pencil pocket on left sleeve | Fleece lined hood
- Performance-Flex on elbows for improved movement
- Abrasion-resistant panels on sleeves and kangaroo pocket
- Thumb holes in cuff to seal out drafts | Reflective piping

8480R Reg | S-5XL

Black



0780 Extreme Sweater Jacket

- 300g 80% Polyester / 20% cotton fleece 3 layer bonded outershell
- 200g Soft microfleece lining | Wind-tight, water-repellent
- 5 Zipper pockets: 2 hand warmer, left chest, left sleeve, right inside
- Waterproof zippers on chest and sleeve pockets
- HiVis lime zipper garages | Reflective silver piping
- Reflective silver piping on zipper and HiVis pull tab | Full zip, stand-up collar

0780R Reg | S-5XL

Gray



WOMEN'S

Also available in Women's, style 9480. See more on pg. 64



9740 PolarForce™ Hybrid Fleece Jacket

NEW PRODUCT

400g Polyester bonded fleece outershell
 Water-repellent, wind-tight
 Abrasion-resistant panels on cuffs, waist and shoulders
 2 Hand warmer zipper pockets
 Right chest pocket with waterproof zipper | HiVis orange piping

9740R Reg | S-5XL

Black



Abrasion-resistant panels on cuffs, waist and shoulders

Performance-Flex | Work with More Flexibility



In the PolarForce™ sweatshirt, the special ribbed design of Performance-Flex expands as you bend or extend your elbows, giving you more flexibility and freedom of movement.



Grip Assist on sleeves helps prevent slipping while handling large items

8440 PolarForce™ Sweatshirt with Performance-Flex

3 Layers:

Layer 1: 310g Fleece blend outershell

Layer 2: 120g Polyester insulation

Layer 3: 180g Jersey lining

Pullover with 1/2 zip closure | Kangaroo front pocket
 1 Chest zipper pocket | Pencil pocket on left sleeve | Hood
 Performance-Flex on elbows for improved movement
 Grip Assist on sleeves | Thumb holes in cuff

8440R Reg | S-5XL

Black





0488 Insulated Quilted Sweatshirt

Pre-shrunk fabric | Large front pockets | Full front zipper closure | Hood

3 Layers

- Layer 1: 310g Fleece blend outershell
- Layer 2: 170g Quilted polyester fiberfill insulation
- Layer 3: 180g Jersey lining

0488R Reg | S-5XL

Black | Navy | Lime



170g Quilted polyester fiberfill insulation
180g Jersey lining



0487 Thermal Sweatshirt

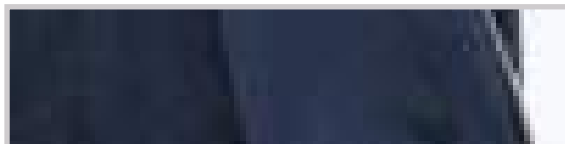
Pre-shrunk fabric | Full front zipper closure | Large front pockets
Thermal knit lining | Hood

2 Layers

- Layer 1: 310g Fleece blend outershell
- Layer 2: 180g Thermal knit lining

0487R Reg | S-5XL

Black | Navy | Gray | Royal Blue



180g Thermal knit lining

Sweatshirts

Get protection from any temperature when completing your outfit with a sweatshirt. Tougher, warmer and better for the job, RefrigiWear sweatshirts work great as an outer layer or for layering.



0486 Hoodie

Pre-shrunk fabric | Front pouch pocket | Pullover | Hood



Layer 1: 310g Fleece blend outershell

0486R Reg | S-3XL

Black | Navy | Gray



0484 HiVis Hooded Sweatshirt

ANSI Class 2 compliant | 310g Outershell
100% Polyester outershell
2 Large front pockets | 2" Silver reflective tape
Full front zipper closure | Hood
Stitchless bonded tape for increased durability
Reflective X on back

0484R Reg | S-5XL

Lime



9487 Thermal Lined Hoodie

310g 60% Cotton / 40% polyester outershell
180g 60% Cotton / 40% polyester color matched thermal lining
Pull over with kangaroo pockets | Drawstring on hood
Pre-shrunk fabric

9487R Reg | S-5XL

Royal Blue



Our heaviest layer
designed for maximum
cold protection

8180 Flex-Wear Heavyweight Top

92% Polyester / 8% spandex | Antimicrobial, anti-static finish
230g Brushed jersey lining | 1/2 Zip with mock turtle collar
1 Chest zipper pocket | HiVis lime accents on chest pocket zippers

8180R Reg | S-5XL

Navy



FLEX-WEAR
Extremely comfortable, lightweight and flexible.



088T

088B

088T Flex-Wear Top 088B Flex-Wear Bottom

92% Polyester / 8% spandex | Antimicrobial, anti-static finish
1/4 Zip collar on shirt | Fly front on pants
4-Way stretch, brushed inner lining | Can also be worn as mid layer

088TR Reg | S-6XL

088BR Reg | S-4XL

Black



FLEX-WEAR
Extremely comfortable, lightweight and flexible.

085T Base Layer Top 085B Base Layer Bottom

70% Polyester / 30% merino wool outershell
100% Polyester inner lining
Flat seams for added comfort
Rib cuffs on pants and shirt | Comfort waistband on bottom

085TR Reg | S-3XL

085BR Reg | S-3XL

Gray



085T

085B

All-Season

Keep your employees protected no matter the conditions with RefrigiWear® All-Season Gear.

For your employees who are exposed to multiple conditions and not just the cold – mild/moderate temperatures or a range of conditions such as wind and rain – you need more than just insulated garments to keep them protected and professional looking. From polos and long sleeves to rain jackets and windbreakers, we have the gear to keep your employees comfortable.

These items are great for transportation professionals.
[See more at www.refrigiwear.com/transportation](http://www.refrigiwear.com/transportation)



NEW PRODUCT

8010 V-Neck Windshirt

100% Polyester wind-tight outershell | 100% Polyester jersey lining
 2 Hand warmer pockets | V-neck rib knit collar
 Partial elastic cuffs | Draw cord hem
 9" Zipper at left waist for easy on/off
 Perfect for transportation professionals

Black/Gray

8010R Reg | S-5XL



8024 Windwear Jacket

100% Polyester wind-tight, water-repellent outershell
 Full zip with color matched zipper | 2 Hand warmer pockets
 2 Inside bag pockets | Cadet collar with chin guard
 Stretch banding at cuffs and waist | Great for layering
 Perfect for transportation professionals

8024R Reg | S-4XL

Black | Gray | Red





8005

8005 Lightweight Long Sleeve

4.3 oz. 100% Polyester
 Closed-hole pinpoint mesh with moisture wicking and snag resistance
 1/4 Zip pullover | Cadet collar
 Active-wear inspired, great for layering
 Perfect for transportation professionals

8005R Reg | S-4XL

Black | Navy



8006

8006 Sport Wick Long Sleeve

7.4 oz. 100% Polyester | Closed-hole mesh | Moisture wicking
 1/4 Zip Pullover | Cadet collar with angled chin guard for comfort
 Contrasting coloring on sleeves and zipper | Tag free comfort
 Active-wear inspired, great for layering
 Perfect for transportation professionals

8006R Reg | S-4XL

Black/Gray | Gray/Black | Navy/Gray



9040 HiVis Long Sleeve with Tape



ANSI Class 3 compliant | 100% Polyester
 UV protection
 Crew neck and rib knit cuffs | Tag free comfort
 2" Reflective tape on sleeves, front and back
 Stitchless bonded tape for increased durability
 Designed for everyday wear | Perfect for transportation professionals

9040R Reg | M-5XL

Lime



9045 HiVis Long Sleeve



100% Polyester | UV protection
 Crew neck and rib knit cuffs | Tag free comfort
 Pocket on left chest | Designed for everyday wear
 Perfect for transportation professionals

9045R Reg | M-5XL

Lime



Back

9040

9045



9015 Short Sleeve Polo

NEW PRODUCT

60% Cotton / 40% polyester pique | 3 Color-match buttons
 Flat knit collar | 2 Stall pencil pocket on left sleeve
 Underarm eyelets and side seam split for breathability
 Tag free comfort | Designed for everyday wear
 Perfect for transportation professionals
9015R Reg | S-5XL

Black | Navy | Royal Blue | Charcoal



9016 Snag-Proof Short Sleeve Polo

NEW PRODUCT

100% Polyester
 Snag-proof, moisture-wicking and odor fighting material
 3 Color-match buttons | Flat knit collar
 Tag free comfort | 2 Stall pencil pocket on left sleeve
 Lightweight with heavy-duty durability | Designed for everyday wear
 Perfect for transportation professionals
9016R Reg | S-5XL

Black | Navy | Royal Blue | Charcoal



9015



9030 HiVis Short Sleeve with Tape

NEW PRODUCT

ANSI Class 2 compliant | 100% Polyester
 UV protection | Crew neck | Tag free comfort
 2" Reflective heatseal tape on front and back
 Stitchless bonded tape for increased durability
 Designed for everyday wear | Perfect for transportation professionals

9030R Reg | M-5XL

Lime



Back

9030

9035

9035 HiVis Short Sleeve

NEW PRODUCT

100% Polyester | UV protection
 Crew neck | Tag free comfort | Pocket on left chest
 Designed for everyday wear | Perfect for transportation professionals

9035R Reg | M-5XL

Lime



Back

9640

9640 HiVis Performance Shirt

NEW PRODUCT

ANSI Class 2 compliant
 92% Polyester / 8% Spandex stretch ripstop fabric
 Wind-tight with UV protection
 Button down collar with black buttons | 2" Reflective tape
 4 Chest pockets: 2 button closure, 1 magnetic, 1 zipper
 Vented at top for breathability
 Perfect for transportation professionals
9640R Reg | M-5XL

Lime/Black



Women's

RefrigiWear® offers industrial-strength insulated clothing just for our female customers. With our women's garments and boots, we considered the best fit, functionality and styles, all while never forgetting that protecting you from the cold is our highest priority.



9480 Women's Extreme Sweater Jacket

300g 80% Polyester / 20% cotton fleece 3 layer bonded outershell
 Water-repellent and wind-tight | 200g Soft microfleece lining
 4 Zipper pockets: 2 hand warmer, left chest, inside
 Waterproof zipper on chest pocket
 Snap on hood | Adjustable cuffs | Draw cord at bottom
 Red zipper garages and accents | Reflective silver piping

9480R Reg | S-3XL

Gray



Durable



Wind-tight



Water Repellent



0473 Women's Pure-Soft Jacket

240g Polyester insulation | 100% Nylon outershell
 Water-repellent and wind-tight
 100% Polyester taffeta lining | 2 Hand warmer zipper pockets
 1 Chest zipper pocket | 1 Inside zipper pocket
 1 Inside micro-pocket | Snap on hood | Snap closure on hood
 Set-in cuff | Stand-up collar

0473R Reg | S-3XL

Black/Charcoal



Wind-tight



Water Repellent



Lightweight





Comfort stretch microfiber shell provides excellent comfort and mobility.



Silver twill lining reflects body heat to keep warmth inside.

7123 Women's Insulated Softshell Bib Overalls

Over 400g of insulating power
 100% Polyester comfort stretch microfiber shell
 Water-repellent, breathable polyurethane membrane
 65g 100% Polyester lining | 2 Hand warmer pockets
 Chest pocket with waterproof zipper | Heel reinforcement patches
 Square back and 2 x 2 rib gussets at side provide better, more comfortable fit
 Red zipper garages and accents | Reflective silver piping

7123R Reg | S-3XL

Black



Durable



Water Repellent



Breathable



Wind-tight



Stretch



0498 Women's Softshell Jacket

Over 300g of insulating power | Water-repellent, wind-tight outershell
 2 Front zipper pockets | Full zip, stand-up collar
 Stylish straight-hemmed cuffs | 100% Polyester microfleece lining

0498R Reg | S-4XL

Black



Durable



Water Repellent



Breathable



Wind-tight



Stretch



0493 Women's Insulated Softshell Jacket

Over 400g of insulating power | Water-repellent, wind-tight outershell
 Silver twill reflective lining | Red accent stitching and collar taping
 1 Hidden chest and 2 front zipper pockets | Full zip, stand-up collar
 Improved wind seal with inset thumbhole cuffs | Adjustable cuffs
 Silver reflective piping on front and back contoured seam
 Stylish straight-hemmed cuffs

0493R Reg | S-3XL

Black



Durable



Water Repellent



Breathable



Wind-tight



Stretch





0423

0424

0423 Women's Quilted Jacket

6 oz. Insulation | Custom diagonal quilted ripstop outershell
Silver sateen reflective lining | 2 Front zipper pockets
Full zip, stand-up collar
Improved wind seal with inset thumbhole cuffs

0423R Reg | S-3XL

Black



0424 Women's Quilted Vest

6 oz. Insulation | Custom diagonal quilted ripstop outershell
Silver sateen reflective lining | 2 Front silver zipper pockets
Full zip, stand-up collar

0424R Reg | S-3XL

Black



0323 Women's Iron-Tuff® Coat

11.25 oz. RefrigiFill™ insulation
Tear and abrasion-resistant 420 denier nylon outershell
Water-repellent, wind-tight finish | Reinforced brass rivets at stress points
Bound seams seal out drafts | 2 Exterior insulated pockets
Interior essentials pocket | Tapered waist with elastic back band
Lower neckline with soft fleece collar

0323R Reg | XS-3XL

Navy



0469 Women's Fleece

280g 2-Sided RefrigiFleece™ | 2 Outside zipper pockets
Full zip, stand-up collar | Lightweight
Stylish straight-hemmed cuffs

0469R Reg | S-4XL

Black



Women's

In addition to products designed specifically for women, we offer a number of other products in women's sizes. Find the best gear, with the best fit for you, so you can get to work.



Boots Available in Women's Sizes:



1120 Women's Skechers® | pg. 97



136 Women's Black Widow™ | pg. 97



145 Crossover Hiker | pg. 95



129 EnduraMax™ | pg. 93



132 Ice Logger™ | pg. 92

Gloves Available in Size Small for Better Women's Fit:

0250 Goatskin | pg. 73

0283 Waterproof High Dexterity | pg. 73

0308 HiVis Thermal Ergo | pg. 78

0207 Ergo | pg. 78

1207 Cut Resistant Permaknit Glove | pg. 79

2207 Ergo Cut Resistant | pg. 79

0312 Acrylic Honeycomb Grip | pg. 80

0211 Lightweight String Liner | pg. 83

0311 Midweight String Liner | pg. 83

0301 Midweight Knit Liner | pg. 83

0205 Lightweight Multicolor Liner | pg. 83

0305 Midweight Multicolor Liner | pg. 83



0283 Waterproof High Dexterity | pg. 73



0379 Insulated HiVis Super Grip | pg. 74



0313 Pigskin | pg. 74



0317 Insulated Leather Mitt | pg. 76

GLOVE ANATOMY

Below are features to consider when selecting your next pair of gloves. These features can help you find the ideal glove for your environment.

Cuffs

There are many different types of cuffs, each with their own benefits, so think about what you will need most: protection, comfort, easy on/off or warmth.



Grips or Dipped

If you have to pick up or handle items all day, a glove with a coating or extra grip features will be ideal. The extra grip patterns will prevent slipping and hand fatigue, while coated or dipped gloves will also provide these benefits and may add some water resistance.



Abrasion Pads and Reinforced Thumb Crotch

Abrasion pads cover frequently used areas with an extra layer for comfort and durability. Reinforced thumb crotches are an extra layer between the thumb and forefinger, providing more toughness.



LEATHER GLOVES

Leather provides the most durability for tough jobs with heavy abrasion.

CUT RESISTANT

We offer several cut resistant gloves so you can safely use knives, box cutters, and more. Cut resistance level, rated A1 through A9, is determined by how much weight is required for a straight blade to cut through the material. The more weight it takes, the higher the rating.



1000-1499 grams to cut
Light/medium cut hazards: Assembly, packaging and general warehouse.



1500-2199 grams to cut
Medium cut hazards: Canning, food preparation and general warehouse.



2200-2999 grams to cut
Medium/heavy cut hazards: Metal fabrication, heavy food preparation and processing, heavy-use warehouse/packaging.

Insulation

Insulation is based on weight as well as layers of insulation. Multiple layers, including outershell and lining, can significantly increase warmth.

Impact Protection

Impact protection gloves feature dense pads on the back of the hand, knuckles or fingers to help protect you from day-to-day bangs and pinches.

Water Repellent

Are you going to come into contact with water, snow or ice? Look for gloves that are waterproof or water-repellent.

Ergo Fit

An ergonomic fit means that the glove is pre-curved so you don't have to work as hard to bend the glove.

DIPPED GLOVES

RefrigiWear® offers a number of different dips and coatings on gloves to help you tackle a range of jobs and conditions

PVC

Great for those with latex allergies. Good abrasion resistance and stronger than latex and nitrile.

*Gloves shown-0212 & 0312 pg. 80



Nitrile

Super abrasion resistant – less likely to tear or puncture. Stands up well to oil and temperature swings. Nitrile Micro Foam is treated to create tiny craters that create added grip in wet and oily conditions.

*Glove shown-0408 pg. 78



Silicone

Less stiff so it offers great dexterity. Extra tacky for added grip.

*Glove shown-0579 pg. 73



Latex

Perfect for extreme temperatures and provides the most grip of any coating.

*Gloves shown-2100 & 0207 pg. 78



INNOVATIVE SOLUTIONS

Keypads and touchscreens are all too common now, but when you have to remove your gloves to use them, it defeats the purpose of even having gloves.

RefrigiWear® offers two solutions:

TOUCHSCREEN SOLUTION TOUCH-RITE NIB

Touch-Rite Nib: RefrigiWear's® exclusive Touch-Rite Nib works on both touchscreens and keypads, allowing employees to remain productive without removing their gloves.



Available exclusively on the T679 Extreme Freezer Glove & NEW T282 Insulated High Dexterity Glove Comes with one nib installed and one replacement.



Located on the right index finger. Easy to unscrew and replace.



Built in storage: A pocket on the left glove allows for secure storage and easy access to replacement nibs.

KEYPAD SOLUTION KEY-RITE NIB

Key-Rite Nib: RefrigiWear's® exclusive Key-Rite Nib works on keypads and pressure sensitive screens, so employees can stay productive and protected. Can be placed on any and as many fingers as needed.



Available Styles >>



Pre-curved, ergonomic fit



0679 Extreme Freezer Glove

100g Thinsulate™ plus foam insulation with tricot lining
 Knitted fabric back with synthetic leather palm
 Pre-curved, ergonomic fit
 Silicone grip pattern on palm | EVA palm pads
 Impact protection on fingers, knuckles and back
 Kevlar reinforced thumb crotch | Rolled fingertips
 Silver reflective strip on knuckles | Stretch neoprene cuff
 Pull tab with rubber ID tag on wrist

Induradex™	
Insulation	9
Durability	8
Dexterity	6

M, L, XL, 2XL Available with Key-Rite & Touch-Rite Nib. See pg. 70 for details.



0419 Double Insulated Cowhide

100g Fiberfill plus new, thicker double foam insulation with tricot lining
 Split cowhide leather
 PVC abrasion pads on fingers and palm
 Safety cuff with heavy-duty knit wrist
 Kevlar thread

Induradex™	
Insulation	9
Durability	9
Dexterity	5

L, XL



PolarForce™ Features

Grip Assist

The silicone dot pattern on the palm provides additional grip assistance to reduce hand fatigue and protect against accidental drops

Performance-Flex

Our new Performance-Flex knuckle expands to give you more flexibility

The Most Insulation

The only glove to offer 200g of Thinsulate® insulation for added cold protection without added bulk

0518 PolarForce™ Glove with Performance-Flex



200g Thinsulate™ plus foam insulation with tricot lining
 Comfort stretch polyester with synthetic leather palm
 Pre-curved, ergonomic fit | Silicone dot Grip Assist pattern on palm
 Performance-Flex knuckle for improved movement
 Stretch neoprene cuff | Kevlar reinforced thumb crotch
 Pinched finger tips for less bulk | HiVis orange piping
 Pull tab with rubber ID tag on wrist
 Touchscreen capability on thumb/forefinger

Induradex™	
Insulation	9
Durability	7
Dexterity	7

Touchscreen capability on thumb/forefinger

Pre-curved, ergonomic fit



-25°F Rated Gloves



0291 ArcticGrip™

Fiberfill plus double foam insulation with fleece lining
 Polyester back with 50% nylon / 50% polyurethane palm
 PVC abrasion pads on fingers and palm
 Waterproof barrier
 Adjustable neoprene cuff

M, L, XL



Induradex™

Insulation	8
Durability	8
Dexterity	8



0353 Ergo Goatskin

Fiberfill plus foam insulation with tricot lining
 Goat grain and spandex outershell
 Pre-curved, ergonomic fit | Reinforced thumb crotch
 Impact protection on knuckles, fingers and palm
 Rolled fingertips | Stretch neoprene cuff

L, XL

Available with Key-Rite Nib. See pg. 70 for details.



Pre-curved, ergonomic fit



Induradex™

Insulation	8
Durability	6
Dexterity	8



2790 ArcticFit™ Max

Fiberfill and foam insulation with polar fleece liner
 Polyester/spandex back | Synthetic leather palm
 Silicone grip pattern on palm and fingers
 Knuckle and wrist impact protection
 Flex points on fingers for dexterity
 Pinched finger tips for less bulk | Neoprene cuff
 Silver reflective piping | Pull tab with rubber ID tag on wrist

M, L, XL



Pre-curved, ergonomic fit



Induradex™

Insulation	8
Durability	7
Dexterity	7



0319 Insulated Cowhide

160g Fiberfill plus foam insulation with tricot lining
 Split cowhide leather
 Reinforced leather on palm and thumb crotch
 Safety cuff with heavy-duty knit wrist | Kevlar thread

M, L, XL

Available with Key-Rite Nib. See pg. 70 for details.



Induradex™

Insulation	8
Durability	9
Dexterity	5



Available in Black



0579 Insulated Impact Pro

100g Thinsulate™ insulation
Spandex back with synthetic leather palm
Impact protection on fingers, knuckles and back
Silicone grip dots on palm | Antimicrobial finish
Reinforced thumb crotch | Stretch neoprene cuff

M, L, XL
Black | Orange



Induradex™

Insulation	7
Durability	8
Dexterity	8



0283 Waterproof High Dexterity

Fiberfill plus foam insulation with brushed tricot lining
Neoprene and spandex back with synthetic leather palm
PVC abrasion pads on fingertips and palm
Waterproof barrier
Safety cuff with heavy-duty knit wrist

S, M, L, XL, 2XL

Induradex™

Insulation	7
Durability	7
Dexterity	8



0282 Insulated High Dexterity

Fiberfill plus full foam insulation including fingertips with improved full brushed tricot lining
Neoprene and spandex back with pig grain palm
PVC abrasion pads on fingertips and palm
Adjustable neoprene cuff

M, L, XL, 2XL

Available with Key-Rite & Touch-Rite Nib. See pg. 70 for details.

Induradex™

Insulation	7
Durability	7
Dexterity	8



0418 Iron-Tuff® Glove

Fiberfill plus foam insulation with tricot brushed lining
420 Denier back with synthetic leather palm
PVC abrasion pads on fingers and palm
Waterproof barrier
Safety cuff, hook & loop closure with heavy-duty knit wrist

L, XL

Induradex™

Insulation	7
Durability	7
Dexterity	7



0250



0251



0250 Goatskin

0251 Goatskin - Latex Coating

0250 Foam insulation with fleece lining | Genuine reverse goat
Heavy-duty knit wrist
S, M, L, XL

0251 Foam insulation with fleece lining | Genuine reverse goat
Water-repellent latex coating | Heavy-duty knit wrist
M, L, XL

Induradex™

Insulation	7
Durability	5
Dexterity	7



0253 Goatskin

Fiberfill plus foam insulation with tricot lining
Reverse full goat skin leather
Reinforced leather on thumb crotch
Adjustable safety cuff with heavy-duty knit wrist
Kevlar thread

L, XL

Induradex™

Insulation	7
Durability	5
Dexterity	7

-15°F Rated Gloves



Available in Lime



0379 Insulated HiVis Super Grip

NEW! More fiberfill plus foam insulation with fleece lining
 Neoprene, spandex and mesh back
 Synthetic leather palm | Silicone grip dots on palm
 Reflective knuckles and fingertips
 Adjustable neoprene cuff
S, M, L, XL
 Black | Lime



Available with Key-Rite Nib.
 See pg. 70 for details.

Induradex™

Insulation	6
Durability	7
Dexterity	8



Pre-curved, ergonomic fit



0243 Nylon & Goatskin

Fiberfill plus foam insulation with tricot lining
 Nylon back with goat grain palm
 Pre-curved, ergonomic fit
 Heavy-duty knit wrist

L, XL

Induradex™

Insulation	6
Durability	5
Dexterity	7



0313 Pigskin

160g Fiberfill insulation with tricot lining
 Pig grain palm and split pig back
 Safety cuff with heavy-duty knit wrist

S, M, L, XL

Induradex™

Insulation	6
Durability	8
Dexterity	6



0318 ChillBreaker® Glove

Foam insulation with brushed tricot lining
 Nylon Taslon outershell
 Vinyl abrasion pads on fingers and palm
 Reflective strips across back of hand
 Safety cuff with heavy-duty knit wrist

L, XL

Induradex™

Insulation	6
Durability	6
Dexterity	7



2430 Grip Gladiator

100g Thinsulate™ insulation with fleece liner
Full silicone coating on palm for superior grip and durability
Neoprene cuff | Reinforced thumb crotch
Hook & loop wrist closure

NEW PRODUCT

Induradex™

Insulation

Durability

Dexterity

M, L, XL, 2XL



Full silicone coating on palm for superior grip and durability. Lift and move boxes with ease and reduce hand fatigue so you can keep going strong.



0314 Cowhide & Canvas

100g Thinsulate™ plus foam insulation with tricot lining
Canvas outershell with suede cowhide palm
Rubberized gauntlet cuff

Induradex™

Insulation

Durability

Dexterity

L, XL



0279 HiVis Super Grip

HiVis neoprene, spandex and mesh back
Synthetic leather palm | Silicone grip dots on palm
Reflective knuckles and fingertips
Adjustable neoprene cuff

Induradex™

Insulation

Durability

Dexterity

M, L, XL

Available with Key-Rite Nib. See pg. 70 for details.



0315 Cowhide Driver's Glove

Foam insulation with fleece lining
Soft, premium cow grain leather
Kevlar thread

Induradex™

Insulation

Durability

Dexterity

L, XL



2330 Ultra Dex

Polyester stretch back | Polyurethane palm coating
Synthetic leather between fingers for increased durability
Reinforced thumb crotch | Hook & loop closure at wrist
Abrasion-resistant outershell with great dexterity
Great for transportation professionals

Induradex™

Insulation

Durability

Dexterity

S, M, L, XL

NEW PRODUCT

Mitts

Mitts provide more warmth than gloves because the fingers are kept together to radiate heat. When dexterity isn't a priority but warmth is, mitts are a perfect choice.



Pre-curved, ergonomic fit



0617 Extreme Freezer Mitt

100g Thinsulate™ plus foam insulation with tricot lining
Knitted fabric back with synthetic leather palm
Silicone grip pattern on palm | EVA palm pads
Impact protection on fingers, knuckles and back
Kevlar reinforced thumb crotch | Pre-curved, ergonomic fit
Silver reflective strip on knuckles | Stretch neoprene cuff
Pull tab with rubber ID tag on wrist

M, L, XL

Induradex™

Insulation	9
Durability	9
Dexterity	6



0317 Insulated Leather Mitt

160g Fiberfill plus foam insulation with tricot lining
Split cowhide leather
Reinforced leather on palm and thumb
Safety cuff with heavy-duty knit wrist
Kevlar thread

S, M, L, XL

Induradex™

Insulation	8
Durability	8
Dexterity	5



0216 3-Finger Leather Mitt

Shearling lining
Split cowhide leather
Safety cuff

L, XL

Induradex™

Insulation	4
Durability	9
Dexterity	6



0504 Softshell Convertible Mitt

180g Fiberfill plus foam insulation with tricot lining
Polyester polyurethane softshell outershell
Reinforced micro-suede palm
Converts from mitt to open finger glove

L, XL, 2XL

Induradex™

Insulation	6
Durability	8
Dexterity	8



0404 Pocketed Convertible Mitt

40g Thinsulate™ with tricot lining
Polyester microfiber outershell with jersey knit liner
Reinforced PVC palm patch | Coverts from mitt to glove
Integrated hand warmer pocket in flip top
Includes 1 pair of 021HH hand-warmers (pg. 108)

L, XL

Induradex™

Insulation	5
Durability	6
Dexterity	7



0304 Premium Wool Convertible Mitt

100g Thinsulate™ insulation with tricot lining
85% Ragg wool / 15% nylon outershell
NEW Improved rip-resistant construction on flip-top
Reinforced suede leather palm patch
Converts from mitt to open-finger glove

L, XL

Induradex™

Insulation	4
Durability	5
Dexterity	8



0204 Herringbone Grip Convertible Knit

Brushed acrylic terry outershell
PVC herringbone grip pattern
Converts from mitt to open finger glove

M, L, XL

Induradex™

Insulation	3
Durability	4
Dexterity	8

Wool Gloves

No other natural material can compete with wool for warmth and comfort. Features like silicone or leather on the palm add durability and functionality.



0521 Insulated Wool Leather Palm

80g Thinsulate™ insulation plus fleece lining
100% Ragg wool outershell
Reinforced leather palm and finger patch
Extended double layer knit cuff



Induradex™

Insulation	5
Durability	6
Dexterity	7

L, XL



0421 Insulated Wool Grip

40g Thinsulate™ insulation plus fleece lining
100% Ragg wool outershell
Silicone herringbone grip on palm
Extended double layer knit cuff



Induradex™

Insulation	4
Durability	5
Dexterity	8

M, L, XL



0321 Insulated Wool

40g Thinsulate™ insulation plus fleece lining
100% Ragg wool outershell
Extended double-layer knit cuff



Induradex™

Insulation	4
Durability	4
Dexterity	8

L, XL



0304 Premium Wool Convertible Mitt

100g Thinsulate™ insulation with tricot lining
85% Ragg wool / 15% nylon outershell
NEW Improved rip-resistant construction on flip-top
Reinforced suede leather palm patch
Converts from mitt to open-finger glove



Induradex™

Insulation	4
Durability	5
Dexterity	8

L, XL



0221 Wool Liner

85% Ragg wool / 15% nylon
Pre-laundered for softness | Extended knit wrist
Sold by the dozen | Volume discounts available

S/M, L/XL



0231 Stretch Wool Liner

91% Merino wool / 9% spandex
Stretch-fit for maximum comfort
Sold by the dozen | Volume discounts available

L



0222 Ragg Wool Dot

85% Wool / 15% nylon outershell
Black PVC dot grips | Reinforced thumb crotch
Sold by the dozen | Volume discounts available

M, L, XL



Pre-curved, ergonomic fit

0507 Dual-Layer Thermal Ergo

Dual-layer outershell and built-in liner for extra warmth
 15-Gauge wind-tight nylon shell
 7-Gauge heavy brushed acrylic liner
 Double nitrile sandy finish palm coating
 Pre-curved, ergonomic fit
M, L, XL



Pre-curved, ergonomic fit

0408 Dual-Layer HiVis Ergo

Dual-layer outershell and built-in liner for extra warmth
 15-Gauge wind-tight nylon shell
 7-Gauge heavy brushed acrylic liner
 Double nitrile sandy finish palm coating
 Pre-curved, ergonomic fit
M, L, XL



Dual-Layer

Like Having a Glove Within a Glove

Get extra protection and better dexterity with dual-layer gloves. Gloves with our unique dual-layer system feature a built-in lining, providing extra warmth and comfort.

Available on styles: 0507, 0408, 1408, 0509, 0410, 0237, 2030 & 2267



Pre-curved, ergonomic fit

0208 HiVis Ergo

Brushed string-knit acrylic shell
 Crinkle finish latex palm coating
 Pre-curved, ergonomic fit | **Sold by the dozen**
M, L, XL



Pre-curved, ergonomic fit

Available in Lime

0308 HiVis Thermal Ergo

7-Gauge heavy brushed acrylic shell
 Crinkle finish latex palm coating | Pre-curved, ergonomic fit
S, M, L, XL

Lime | Orange



Pre-curved, ergonomic fit

2100 Full Dip Ergo

String-knit polyester shell
 Crinkle finish latex palm and dorsal coating
 Dipped portions offer waterproof capability
 Pre-curved, ergonomic fit | **Sold by the Dozen**
M, L, XL



Pre-curved, ergonomic fit

0207 Ergo

String-knit polyester shell | Crinkle finish latex palm coating
 Pre-curved, ergonomic fit | **Sold by the dozen**
S, M, L, XL



Pre-curved, ergonomic fit

0307 Thermal Ergo

7-Gauge brushed terry shell
 Crinkle finish latex palm coating
 Pre-curved, ergonomic fit
M, L, XL



Pre-curved, ergonomic fit

0407 ProWeight Thermal Ergo

7-Gauge heavy brushed acrylic shell
 Pro-weight terry lining
 Crinkle finish latex palm coating | Pre-curved, ergonomic fit
M, L, XL

Palm Coated & Specialty Gloves



Pre-curved, ergonomic fit



2207 Ergo Cut Resistant



13-Gauge cut-resistant shell
ANSI level A3 cut resistance
Black nitrile foam coating with smooth finish
Pre-curved, ergonomic fit

S, M, L, XL



Pre-curved, ergonomic fit



2237 HiVis Thermal Ergo Cut Resistant



7-Gauge terry shell
ANSI Level A3 cut resistance
Black nitrile foam coating with crinkle finish
Pre-curved, ergonomic fit

M, L, XL



Pre-curved, ergonomic fit



2267 Dual-Layer Thermal Ergo Cut Resistant



13-Gauge cut-resistant shell with terry liner
ANSI Level A5 cut resistance
Black nitrile foam coating with smooth finish
Pre-curved, ergonomic fit

M, L, XL



Pair with Liner

2233 Fingerless Glove



Terrycloth and mesh back
Synthetic leather palm and thumb
Palm patch with foam for added protection
Silicone grid pattern on palm and thumb patches for added grip
Reinforced thumb patch | Fingerless for added dexterity
Adjustable neoprene cuff
Pair with liner for added warmth (sold separately)

M, L, XL



1207 Cut Resistant Permaknit Glove

Most durable liner | 13-Gauge cut-resistant string knit
CE 5/ANSI level A3 cut resistance
FDA accepted for food contact application
Sold by the dozen | Volume discounts available

S, M, L, XL



0229 Thin Value Grip

Nylon/spandex liner | Nitrile micro foam dipping
Super dexterity | Sold by the dozen
Great for peeling labels

S/M, L/XL



2260 ShrinkMax



Stainless Steel/Kevlar/Poly/Cotton knit
ANSI Level A4 cut resistance
Reinforced Kevlar® stitching at thumb crotch
Super abrasion-resistant design for extreme durability
Perfect for manual shrink-wrapping

M, L, XL



ShrinkMax gloves are designed with reinforced Kevlar® stitching at the thumb crotch so they won't wear out, even after repeated manual shrink wrapping.



Sold by the Dozen | Volume Discounts Available

RefrigiWear's® knit gloves have various types of coatings to make gripping items easier, resulting in less hand fatigue. The coatings provide abrasion protection while the knit construction allows for more breathability and warmth.



Pre-curved, ergonomic fit

2230 Z-Grip Glove

Brushed acrylic loop terry
Foam rubber zig-zag pattern on palm increases grip and displaces water
Foam rubber fingertip reinforcements
Pre-curved, ergonomic fit | Durable and warm
Sold by the pair
M, L, XL



0309 Palm-Coated Terry Grip

Cotton loop terry | PVC palm coating
Sold by the dozen | Volume discounts available

L



0409 Herringbone Grip

Brushed acrylic loop terry | PVC herringbone palm coating
Sold by the dozen | Volume discounts available

M, L, XL



0509 Dual-Layer Herringbone Grip

Dual-layer outershell and built-in liner for extra warmth
Acrylic outershell with brushed acrylic loop terry liner
Silicone herringbone palm coating | **Sold by the pair**
Volume discount available

M, L, XL



0212 Poly Honeycomb Grip

Poly/cotton knit | PVC honeycomb grip
Double-sided for extended wear
PVC reinforced thumb crotch
Sold by the dozen | Volume discounts available

M, L, XL



0312 Acrylic Honeycomb Grip

Acrylic/poly knit | PVC honeycomb grip
Double-sided for extended wear
PVC reinforced thumb crotch
Sold by the dozen | Volume discounts available

S, M, L, XL



0412 Glacier Grip™

Heavyweight cotton/acrylic | PVC honeycomb grip
Double-sided for extended wear
PVC reinforced thumb crotch
Sold by the dozen | Volume discounts available

M, L, XL

Sold by the Dozen | Volume Discounts Available



2030 Dual-Layer Knit

Dual-layer outershell and built-in liner for extra warmth
Woven 13 gauge acrylic outershell
Super soft 7-gauge brushed acrylic liner
Snug fit for more comfort and tactility
Sold by the dozen | Volume discounts available

S/M, L/XL



0303 Fingerless Dot Grip

Midweight | Poly/cotton knit
PVC dot grip | Double-sided for extended wear
Sold by the dozen | Volume discounts available

L



0210 Lightweight Dot Grip

Cotton/poly string knit | PVC dot grip
Double-sided for extended wear
Sold by the dozen | Volume discounts available

M, L, XL



0310 Midweight Dot Grip

Natural: Poly/cotton loop terry | **HiVis:** Acrylic loop terry
PVC dot grip | Double-sided for extended wear
PVC reinforced thumb crotch

Sold by the dozen | Volume discounts available
M, L, XL

Natural | Lime | Orange



0410 Dual-Layer Heavyweight Dot Grip

Dual-layer outershell and built-in liner for extra warmth
10 oz. Poly/cotton knit shell plus 14 oz. loop terry liner
PVC dot grips | Double-sided for extended wear
Sold by the dozen | Volume discounts available

M, L, XL



0206 Value Jersey

Poly/cotton jersey knit | Lightweight knit wrist
Sold by the dozen | Volume discounts available

M, L, XL



0306 Insulated Jersey

Poly/cotton jersey knit | Foam insulation with tricot lining
Lightweight knit wrist
Sold by the dozen
Volume discounts available

M, L, XL



0406 Premium Insulated Jersey

Poly/cotton jersey knit | Foam insulation with tricot lining
PVC dot grip on palm and fingers | Lightweight knit wrist
Sold by the dozen
Volume discounts available

M, L, XL



Sold by the Dozen | Volume Discounts Available



1207 Cut Resistant Permaknit Glove



Most durable liner | 13-Gauge cut-resistant string knit
CE 5/ANSI level A3 cut resistance
FDA accepted for food contact application
Sold by the dozen | Volume discounts available

S, M, L, XL



Why use a touchscreen liner?

Handheld electronic devices like **phones** and **tablets** are being used much more frequently in the workplace. With a touchscreen glove, you are able to use **touchscreen electronic products** without having to remove the glove.



0227 Touchscreen Glove

Acrylic knit with PVC dot grip on palm
Special fingertips allows for use of touch screens
Wear with fingerless mitts for extra warmth and added touchscreen functionality | **Sold by the pair**
Volume discounts available

S/M, L/XL



0237 Dual-Layer Thermal Touchscreen Glove

Dual-layer outershell and built-in liner for extra warmth
Acrylic knit with brushed microfiber liner
Special fingertips allows for use of touchscreens
Wear with fingerless mitts for extra warmth plus touchscreen functionality | **Sold by the pair**
Volume discounts available

S/M, L/XL



0221 Wool Liner

85% Ragg wool / 15% nylon
Pre-laundered for softness | Extended knit wrist
Sold by the dozen | Volume discounts available

S/M, L/XL



0231 Stretch Wool Liner

91% Merino wool / 9% spandex
Stretch-fit for maximum comfort
Sold by the dozen | Volume discounts available

L



0223 Polypropylene Liner

100% Stretch polypropylene | Moisture wicking
Sold by the dozen | Volume discounts available

M, L



0225 Thermax™ Liner

100% Thermax™ hollow-core fibers prevent heat loss
Moisture wicking | **Sold by the dozen**
Volume discounts available

M, L



Sold by the Dozen | Volume Discounts Available



Fingerless Glove

Extend the life of your liners by pairing them with our Fingerless Glove! **See more on page 79**



0302 Stretch Liner

98% Acrylic / 2% spandex | Moisture wicking
Stretch-fit for maximum comfort
Sold by the dozen | Volume discounts available

One size fits all



0301 Midweight Knit Liner

Poly/cotton string knit
Sold by the dozen | Volume discounts available
S, L



0401 Heavyweight Knit Liner

Brushed acrylic loop terry
Sold by the dozen | Volume discounts available
S/M, L/XL



0205 Lightweight Multicolor Liner

Poly/cotton string knit | Multi-colored design
Sold by the dozen | Volume discounts available

S, L



0305 Midweight Multicolor Liner

Poly/cotton string knit | Multi-colored design
Sold by the dozen | Volume discounts available

S, L



0211 Lightweight String Liner

Cotton/poly string knit
Sold by the dozen | Volume discounts available
NEW size XS

XS, S, L



0311 Midweight String Liner

Poly/cotton string knit
Sold by the dozen | Volume discounts available
NEW size XS

XS, S, L

Why use a liner?



Glove liners provide an extra layer of protection against injury, help absorb perspiration, and increase the warmth of other gloves. They can also provide extra padding and be worn alone when temperatures are moderate. Pick a size that will provide a snug fit, but not too tight, for maximum dexterity and warmth.